



## Optimal productivity

- Full proportional controls and simultaneous boom functions
- Lifts to full height in 44 seconds

## Outstanding rough terrain driving features

- 4 wheel drive means greater manoeuvrability
- Hydraulic differential lock
- 38 cm ground clearance

**10.6 m outreach provides a large working envelope**



**Haulotte**   
GROUP

More than lifting



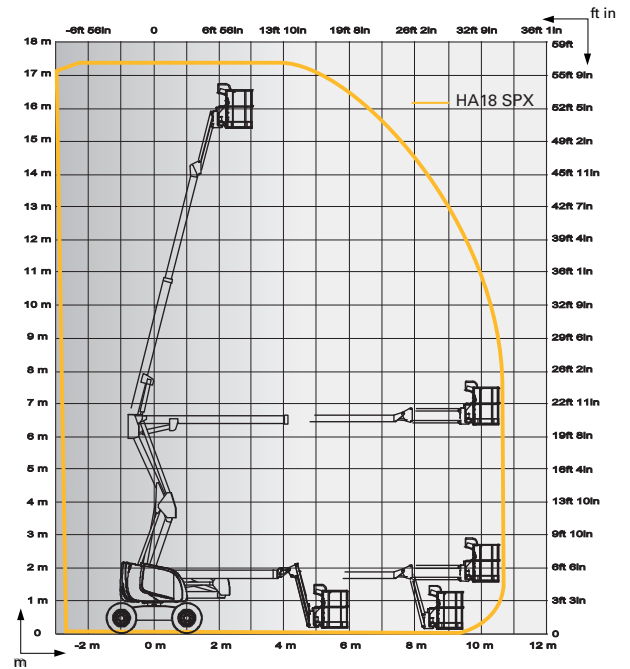
# HA18 SPX

ROUGH TERRAIN ARTICULATING BOOMS

## TECHNICAL DATA

## HA18 SPX

|                            |                   |
|----------------------------|-------------------|
| Working height             | 17.2 m            |
| Platform height            | 15.2 m            |
| Horizontal outreach        | 10.6 m            |
| Up and over clearance      | 6.5 m             |
| Lift capacity              | 230 kg            |
| <b>F x G</b> Platform size | 1.8 x 0.8 m       |
| <b>A</b> Length - stowed   | 7.5 m             |
| Transport length           | 5.8 m             |
| <b>B</b> Width             | 2.3 m             |
| <b>C</b> Height - stowed   | 2.2 m             |
| Transport height           | 2.55 m            |
| Vertical jib rotation      | 140° (+70/-70)    |
| Platform rotation          | 178° (+89/-89)    |
| Turntable rotation         | 350°              |
| Tailswing                  | 0 m               |
| <b>D</b> Wheelbase         | 2 m               |
| <b>E</b> Ground clearance  | 38 cm             |
| Tilt                       | 5°                |
| Drive speed                | 0.8 - 5.5 km/h    |
| Gradeability               | 40 %              |
| Turning radius - outside   | 4.5 m             |
| Tires - foam-filled        | 14-17.5           |
| Power source               | 31.2 kW - 42.4 hp |
| Hydraulic system capacity  | 100 l             |
| Fuel tank capacity         | 75 l              |
| Weight                     | 7 660 kg          |



## STANDARD EQUIPMENT

- 4 wheel drive (2 wheel steer)
- 350° turntable
- Safe to use in winds up to 45 km/h
- Swing out engine tray for ease of maintenance
- 75 l fuel tank; 1.50 m filling height
- 5° tilt alarm
- 12 V battery / electrical control system
- Auxiliary power in the platform for emergency descent
- Brake release
- Hourmeter
- Slewing block pin
- Towing hooks / lifting eyes

## OPTIONS AND ACCESSORIES

- 4.1 kW on-board generator
- Power to platform
- Large basket 2.3 x 0.80 m (lift capacity 200 kg)
- Travel alarm
- Rotating beacon
- Working light
- Catalytic exhaust
- Biodegradable hydraulic oil
- Cold Weather Package
- Warm environment kit
- Air line in platform

