

## 600SC TELESCOPIC BOOM LIFTS

### Platform

- 0.91 m x 1.83 m low mount platform
- Side entry with drop bar mid rail
- Multiple function operation
- Full proportional drive joystick control with integral thumb steer switch
- Full proportional main boom and swing joystick control
- Multiple speed control for telescope and platform rotate
- Selectable creep speed on drive / lift and swing functions
- 160 degree powered platform rotator
- Platform console machine status light panel <sup>1</sup>
- Load sensing system
- AC cable to platform

### Power & Transmission

- Deutz D2011L04 (46 kW) diesel engine
- Engine distress warning/shut down system <sup>2</sup>
- Gull-wing hoods
- Swing-out engine tray
- Spark arresting type muffler
- Control ADE® - Advanced Design Electronics System
- Hydrostatic drive transmission
- Horn

### Functional Equipment & Accessories

- 3 degree tilt alarm and indicator light
- Steel tracks
- Lifting/tie down lugs
- Hour meter
- Ground control selector switch with key lock
- Platform tool tray
- 12V DC auxiliary power

### Available Options

- 0.91 m x 2.44 m low mount platform
- Side entry with inward swing gate
- 13 mm air line to platform
- Detachable rubber track pads
- On-board 4,000 W generator
- SkyPower® package 7,500 watt on-board generator
- SkyWelder® package 250 amp welder in the platform <sup>3</sup>
- All motion alarm
- Alarm package <sup>4</sup>
- Light package <sup>5</sup>
- Head and tail lights
- Flashing amber beacon
- Plugs & Sockets
- Hostile environment package <sup>6</sup>
- Hydraulic oil cooler
- Catalytic Purifier Muffler
- Corner storage tray



<sup>1</sup> Provides indicator lights at platform control console for system distress, low fuel, tilt light, and foot switch status.

<sup>2</sup> Low oil pressure and high coolant temperature alarms with shut-down enabled/disabled by analyser.

<sup>3</sup> Available when integrated with the SkyPower® package.

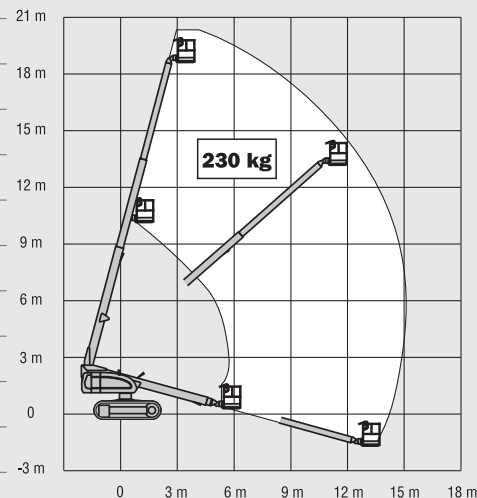
<sup>4</sup> Includes all-motion alarm and flashing amber beacon.

<sup>5</sup> Includes platform mounted work lights and head & tail lights.

<sup>6</sup> Includes console cover, boom wipers and cylinder bellows.

# 600SC TELESCOPIC BOOM LIFTS

Platform Height	18.36 m
Horizontal Outreach	15.08 m
Swing (continuous)	360°
Platform Capacity – Unrestricted	230 kg
Platform Rotator (hydraulic)	160°
A. Platform Size	0.91 m x 1.83 m
B. Overall Width	2.49 m
C. Tailswing (working condition)	1.10 m
D. Stowed Height	2.56 m
E. Overall Length	8.51 m
F. Stowed Length	8.51 m
G. Ground Clearance	0.38 m
Machine weight <sup>1</sup>	10,230 kg
Maximum Ground Bearing Pressure	0.383 kg/cm <sup>2</sup>
Drive Speed	2.6 km/h
Gradeability	55%
Turning Radius	Zero
Type of Tracks <sup>2</sup>	Steel
Tracks Width	0.50 m
Diesel Engine -Deutz D2011L04 <sup>3</sup>	46 kW
Fuel Tank Capacity	148 L
Hydraulic System	141 L
Auxiliary Power	12V DC

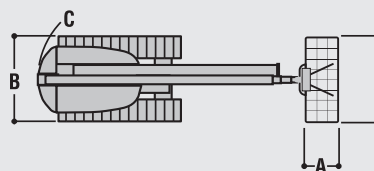
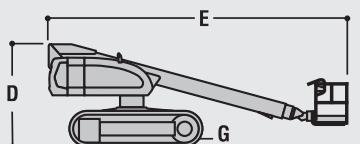


**JLG Industries, Inc. is a leading designer and manufacturer of access equipment and complementary services and attachments.**

JLG has manufacturing facilities in the United States, France, Romania, China and Belgium. Customers throughout Europe, Scandinavia, Africa and the Middle East benefit from a network of dedicated sales and service operations designed to deliver the highest levels of support.

JLG is an Oshkosh Corporation company.

[www.jlgeurope.com](http://www.jlgeurope.com)



<sup>1</sup> Certain options or country standards may increase weight and/or dimensions.

<sup>2</sup> Optional detachable rubber pads available

<sup>3</sup> With EGR.