

# ZOOMLION

## ARTICULATING BOOM LIFT

### ZA24J

Comply with CE Standard

### HIGHLIGHTS

- ▶ Provide a work height of 26.23m, horizontal outreach of 18.9m, up and over height of 9.29m, and lift capacity of 250kg for higher efficiency
- ▶ Build-in multiple pressure control leveling system to enhance stability
- ▶ Precise load sensing system to improve overload safety operations
- ▶ Platform fast lifting function provides high-efficient performance without tower boom operation
- ▶ Outstanding below ground reach of 5.1m

### FEATURES

#### Standard Features

Horn
All motion alarm
Proportional control
Self-closing entry gate
Flashing beacon
Auto-leveling system
Emergency stop button
Over tilt protection system
Emergency descent system
On-board diagnostic system
Oscillating axle
4.3' LED display
Load sensing system
Swing-out engine tray
Anti-crushing device

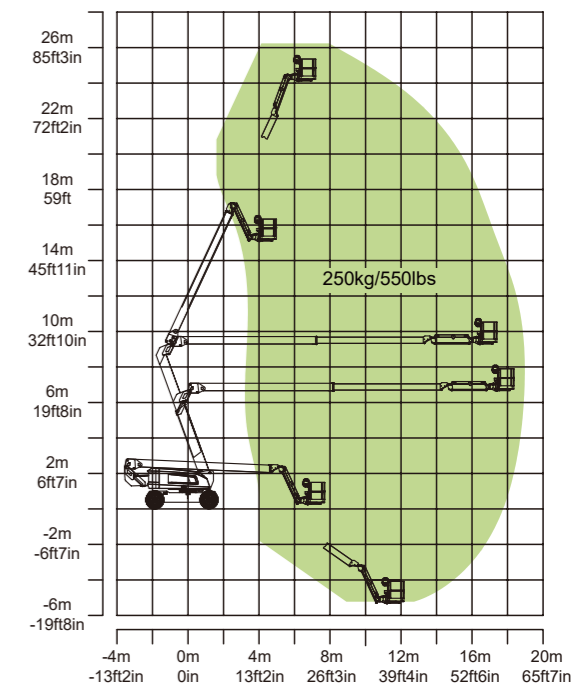
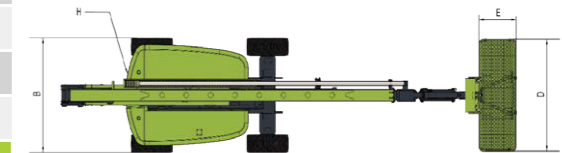
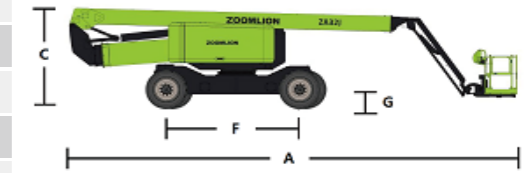
#### Accessories & Options

- ▶ Platform work lights
- ▶ AC power to platform
- ▶ GPS
- ▶ 8kw Hydraulic generator
- ▶ Platform mesh to Mid or Top rail
- ▶ Fall Arrest, Rear Entry
- ▶ Storage Tray
- ▶ Welder Ready Package
- ▶ White Noise Alarm

ACCESS WITH ZOOMLION GREEN



Model	ZA24J	
	Imperial	Metric
<b>Size</b>		
Work Height	86ft 1in	26.23m
Platform Height	79ft 6in	24.23m
Horizontal Outreach	62ft	18.9m
Up and Over Height	30ft 6in	9.29m
A - Stowed Length	36ft 12in	11.27m
B - Stowed Width	8ft 2in	2.49m
C - Stowed Height	9ft 3in	2.82m
D - Platform Length	8ft	2.44m
E - Platform Width	3ft	0.91m
F - Wheelbase	10ft	3.05m
G - Ground Clearance	1ft 5in	0.42m
<b>Performance</b>		
Platform Capacity	550 lb	250kg
Drive Speed	3.11 mph	5.0km/h
Gradeability	45%(24°)	
Axles Oscillation	8in	0.2m
Turning Radius (Inside)	10ft 4in	3.14m
Turning Radius (Outside)	21ft 3in	6.48m
Turntable Swing	360° continuous	
Platform Rotation	±90°	
H-Tail Swing	3ft 4in	1.022m
Max. Working Slope	4°	
Max. Wind Speed	28mph	12.5m/s
<b>Power</b>		
Diesel Engine	Kubota V2607-CR-TI-EW02 Kubota V3307-DI-T-MAR1-ET02	
Fuel Tank Capacity	39.6 (us gal)	150L
Auxiliary Power	12V	
Control Voltage	12V	
Hydraulic System Capacity	63.4 (us gal)	240L
Hydraulic Tank Capacity	47.6 (us gal)	180L
<b>Tire</b>		
Type	15-625 Foam-filled Tires	
<b>Weight</b>		
Gross	39992 lb	18140kg



AJ Access Platforms Ltd, Pill Way, Severn Bridge Industrial Estate,  
Caldicot Monmouthshire, NP26 5PU, UK  
Phone: +44 (0) 1291 421 155  
Email: info@accessplatforms.com, sales@accessplatforms.com  
Web: www.accessplatforms.com

Get Pricing

