

ZOOMLION

TELEHANDLER

ZTH2506/ZTH3507/ZTH3513

FEATURES

Standard

- ▶ Horn
- ▶ Reversing buzzer
- ▶ Flashing beacon
- ▶ Electro-hydraulic proportional control
- ▶ Emergency stop system
- ▶ Work light
- ▶ 10.1in color display
- ▶ Automatic leveling fork
- ▶ Frame leveling(Only ZTH3513)
- ▶ Inching (hydrostatic only)
- ▶ RAS system
- ▶ Heating and cooling air condition
- ▶ Moment limiting system
- ▶ USB port
- ▶ Bluetooth
- ▶ Radio
- ▶ Blowback fan(Only ZTH3507)
- ▶ Door monitoring system
- ▶ Seat occupied monitoring system
- ▶ Remote screen projection
- ▶ Reversing camera

Option

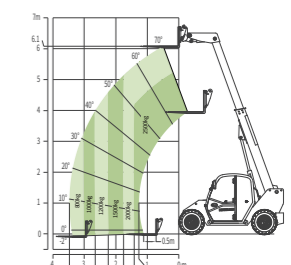
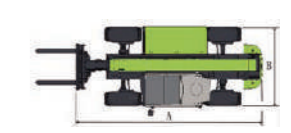
- ▶ Quick connect hydraulic bolt function
- ▶ Click-to-retract
- ▶ Position memory
- ▶ Remote control
- ▶ Cold start pack
- ▶ Fault diagnosis
- ▶ Auxiliary power

Optional attachments

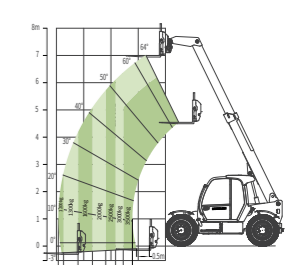
- ▶ Floating fork
- ▶ Bucket
- ▶ Pitch-fork
- ▶ Round clasp
- ▶ Crane boom (with winch)
- ▶ Platform
- ▶ Hydraulic winch
- ▶ Single hook

HIGHLIGHTS

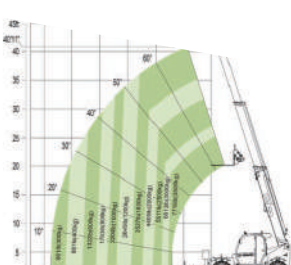
- ▶ Strong power chassis with excellent driving performance and off-road capacity
- ▶ 4×4 drive system, front and rear driving axle with antislip differential gear for great traction force and escape ability
- ▶ Hydraulic cylinder driven extension system for smooth movement, strong capacity and large work envelope
- ▶ 10.1-inch display screen integrates monitoring, control and entertainment, with a good human-computer interaction experience
- ▶ Standard floating fork and optional platform, bucket, crane boom and other attachments meet the diverse needs of customers



Range of Motion ZTH2506



Range of Motion ZTH3507



Range of Motion ZTH3513

| Model | ZTH2506 | | ZTH3507 | | ZTH3513 | |
|-----------------------------|---|------------------------|----------------------------|------------------------|------------------------------|-------------------------|
| | Metric | Imperial | Metric | Imperial | Metric | Imperial |
| Size | | | | | | |
| A Overall length | 3.95m | 13ft | 4.84m | 15ft 11in | 5.84m | 19ft 2in |
| B Overall width | 1.84m | 6ft 0.5in | 2.29m | 7ft 6in | 2.28m | 7ft 6in |
| C Overall height | 1.98m | 6ft 6in | 2.57m | 8ft 5in | 2.55m | 8ft 4in |
| F Wheelbase | 2.35m | 7ft 8in | 3.04m | 9ft 11in | 3.07m | 10ft 1in |
| G Min ground clearance | 0.33m | 1ft 1in | 0.44m | 1ft 5in | 0.42m | 1ft 5in |
| Performance | | | | | | |
| Rated capacity | 2500kg | 5510lb | 3500kg | 7716lb | 3500kg | 7716lb |
| Max lift height | 6m | 19ft 10in | 7m | 22ft 11in | 12.7m | 41ft 10in |
| Lift capacity at max height | 2000kg | 4410lb | 3000kg | 6614lb | 3500kg | 7716lb |
| Max forward reach | 3.43m | 11ft 3in | 3.95m | 12ft 11in | 8.75m | 28ft 8in |
| Lift capacity at max reach | 800kg | 1760lb | 1200kg | 2646lb | 1000kg | 2204lb |
| Weight | 4970kg | 10957lb | 7965kg | 17559.8lb | 9880kg | 21782lb |
| Max traction force | 35.5kN | 7980lbf | 66kN | 14837.39lbf | 82kN | 18434lbf |
| Frame leveling angle | / | | / | | ±10° | |
| Turning radius - outside | 3.38m | 11ft 1in | 3.98m | 13ft | 3.8m | 12ft 6in |
| Power | | | | | | |
| Engine | KUBOTA V3307-CR-T-EW08M/ KUBOTA V3307-DI-T-MAR1-ET02 | | WEICHAH WP4.1/Cummins F3.8 | | Cummins QSF 3.8/Cummins F3.8 | |
| Rated power | 54.6kw | 73.2Hp | 72/90kw | 97/120Hp | 73/55kW | 98/74HP |
| Max torque | 289.3/267Nm | 213.5/195.6lb*ft | 460/500Nm | 339/368lb*ft | 420/400Nm | 310/295lb*ft |
| Cylinder | 4 | | 4 | | 4 | |
| Displacement | 3310ml | 0.87gal | 4088/3760ml | 1.08/0.99gal | 3760ml | 0.99gal |
| Transmission | Hydrostatic | | Hydraulic | | Hydrostatic | |
| Max drive speed | 25km/h | 12.2mph | 40km/h | 24.85mph | 32.5/22.5km/h | 20.19/13.98mph |
| Steering | Front wheels/4WS/Crab | | Front wheels/4WS/Crab | | Front wheels/4WS/Crab | |
| Tire | | | | | | |
| Type | 12.00-16.5 | | 460/70R24 | | 400/70R24 | |
| Hydraulic | | | | | | |
| Implement pump | Gear pump | | Piston pump | | Piston pump | |
| Hydraulic flow - pressure | 88-270L/min-bar | 23.3gal/min -270bar | 150-270L/ min-bar | 39.6gal/min -270bar | 132-270 L/ min-bar | 34.87gal/min -270bar |
| Tank | | | | | | |
| Hydraulic tank capacity | 110L | 29gal | 145L | 38.3gal | 145L | 38.3gal |
| Fuel tank capacity | 65L | 17gal | 145L | 38.3gal | 145L | 38.3gal |
| Fork | | | | | | |
| Fork size | 1220mm× 100mm×45mm | 4ft×3.9in× 1.77in | 1220mm× 122mm×50mm | 4ft×4.8in× 1.968in | 1220mm× 122mm×50mm | 4ft×4.8in× 1.968in |
| Fork rotary | 130° | | 142° | | 126° | |
| Working speed | | | | | | |
| Boom up/down | 7.5/6.5s | | 8/8s | | 15/12s | |
| Boom extend/retract | 6/5s | | 8/9s | | 17/15s | |
| Fork lift | 4s | | 5s | | 5s | |
| Fork retract | 3.5s | | 4s | | 5s | |

ACCESS WITH ZOOMLION GREEN



AJ Access Platforms Ltd, Pill Way, Severn Bridge Industrial Estate,
Caldicot Monmouthshire, NP26 5PU, UK
Phone: +44 (0) 1291 421 155
Email: info@accessplatforms.com, sales@accessplatforms.com
Web: www.accessplatforms.com

[Get Pricing](#)

