

ZOOMLION

TELEHANDLER ZTH4525R/ZTH4518R

FEATURES

Standard

- ▶ Horn
- ▶ Reversing buzzer
- ▶ Flashing beacon
- ▶ Electro-hydraulic proportional control
- ▶ Emergency stop system
- ▶ Work light
- ▶ 10.1in color display
- ▶ Automatic leveling fork
- ▶ Inching
- ▶ Moment limiting system
- ▶ Heating and cooling air condition
- ▶ ECO mode
- ▶ Fault diagnosis
- ▶ USB port
- ▶ Bluetooth
- ▶ Radio
- ▶ Click-to-retract
- ▶ XY axis action
- ▶ Position memory
- ▶ Auxiliary power
- ▶ Door monitoring system
- ▶ Seat occupied monitoring system
- ▶ Reversing camera

Option

- ▶ Quick connect hydraulic bolt function
- ▶ Attachment automatic identifying system
- ▶ Remote control
- ▶ Cold start pack

Optional attachments

- ▶ Floating fork
- ▶ Bucket
- ▶ Crane boom (with winch)
- ▶ Platform
- ▶ Hydraulic winch
- ▶ Single hook

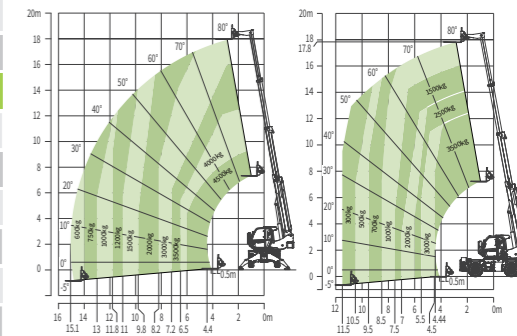
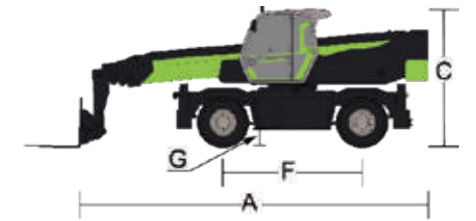
HIGHLIGHTS

- ▶ Hydrostatic driving for comfort driving experience and fast traveling speed
- ▶ 4×4 driving system provides large traction force and good off-road ability
- ▶ 360° continuous rotating, large working range, adapt to various working conditions
- ▶ 10.1-inch display screen integrates monitoring, control and entertainment, with a good human-computer interaction experience
- ▶ Standard floating fork and optional platform, bucket, crane boom and other attachments meet the diverse needs of customers

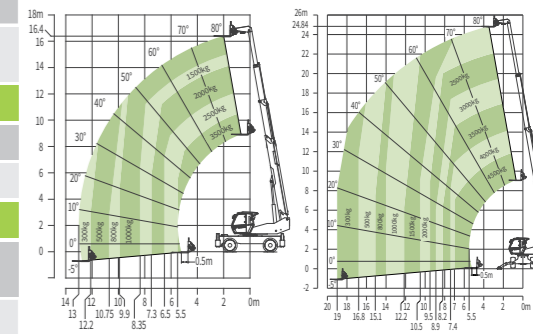
ACCESS WITH ZOOMLION GREEN



Model	ZTH4518R		ZTH4525R	
	Metric	Imperial	Metric	Imperial
Size				
A Overall length	7.33m	24ft 1in	8.9m	29ft 2in
B Overall width	2.45m	8ft	2.48m	8ft 2in
C Overall height	3.11m	10ft 2in	3.04m	9ft 11in
F Wheelbase	2.6m	8ft 6in	3.07m	10ft 1in
G Min ground clearance	0.35m	1ft 2in	0.35m	1ft 2in
Performance				
Rated capacity	4500kg	9920lb	4500kg	9920lb
Max lift height	18m	59ft 1in	24.8m	81ft 4in
Lift capacity at max height	3000kg	6613lb	2000kg	4409lb
Max forward reach	15.1m	49ft 6in	19m	62ft 4in
Lift capacity at max reach	600kg	1322lb	300kg	661lb
Weight	14500kg	31967lb	17000kg	37479lb
Max traction force	95kN	21357lb	95kN	21357lb
Turning radius - outside	3.6m	11ft 9in	4.2m	13ft 9in
Power				
Engine	Cummins QSF3.8/Cummins F3.8		Cummins QSF3.8/Cummins F3.8	
Rated power	93/90kw	125/121Hp	93/90kw	125/121Hp
Max torque	500Nm	368lb*ft	500Nm	368lb*ft
Cylinder	4		4	
Displacement	3760ml	0.99gal	3760ml	0.99gal
Transmission	Hydrostatic		Hydrostatic	
Max drive speed	35km/h	21.75mph	35km/h	21.75mph
Steering	Front wheels/4WS/Crab		Front wheels/4WS/Crab	
Tire				
Type	405/70-20 18PR		445/65-22.5	
Hydraulic				
Implement pump	Piston pump		Piston pump	
Hydraulic flow - pressure	107-280 L/min-bar	28.26gal/min -280bar	107-280 L/min-bar	28.26gal/min -280bar
Tank				
Hydraulic tank capacity	150L	39.6gal	150L	39.6gal
Fuel tank capacity	140L	37gal	140L	37gal
Fork				
Fork size	1220mm × 150mm × 50mm	4ft × 5.9in × 1.968in	1220mm × 150mm × 50mm	4ft × 5.9in × 1.968in
Fork rotary	118°		118°	
Working speed				
Boom up/down	26/19s		37/23s	
Boom extend/retract	19/19s		38/36s	
Fork lift	6s		6s	
Fork retract	5s		5s	
Rotate speed	2.3r/min		2.3r/min	
Outrigger lowering	6s		6s	
Outrigger retracting	5s		5s	



Range of Motion ZTH4518R



Range of Motion ZTH4525R

AJ Access Platforms Ltd, Pill Way, Severn Bridge Industrial Estate,
Caldicot Monmouthshire, NP26 5PU, UK
Phone: +44 (0) 1291 421 155
Email: info@accessplatforms.com, sales@accessplatforms.com
Web: www.accessplatforms.com

[Get Pricing](#)

