

# ZOOMLION SPIDER LIFT ZX37T

Comply with CE Standard



## HIGHLIGHTS

- ▶ 1.2m ultra-narrow width, quick-change work platform, easy access to compact spaces
- ▶ 120kg/230kg/330kg various loads for various working conditions
- ▶ Engine + Plug-in work mode for multiple applications
- ▶ Symmetric layout boom, great structural rigidity, and small boom deflection
- ▶ Telescopic jib for flexible boom end
- ▶ Non-marking rubber track suitable for all terrains

## FEATURES

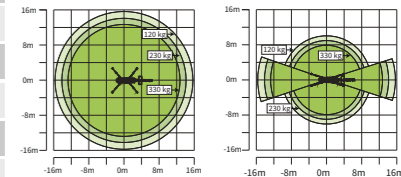
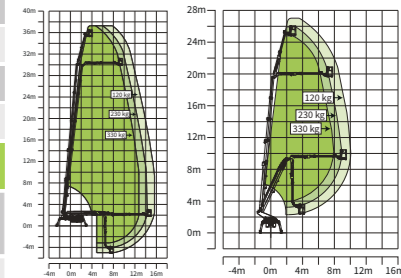
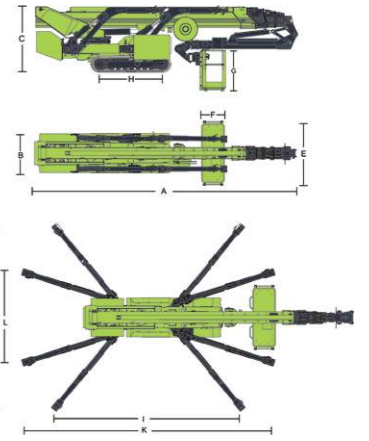
### Standard Features

Proportional control
All motion alarm
Flashing beacon
Self-closing entry gate
Emergency descent system
Emergency stop button
Auto-leveling system
On-board diagnostic system
Auto-leveling outrigger
Non-marking rubber track
Load sensing system
Color display
Horn
Hour meter
Use while charging
AC power to platform

ACCESS WITH ZOOMLION GREEN



Model	ZX37T	
	Imperial	Metric
<b>Size</b>		
Work Height	122ft 5in	37.3m
Platform Height	115ft 10in	35.3m
Horizontal Outreach	51ft 6in	15.7m
Below Ground Reach	18ft 8in	5.7m
A - Stowed Length (w/ platform)	25ft 11in	7.9m
D - Stowed Length (w/o platform)	25ft 11in	7.9m
B - Stowed Width	3ft 11in	1.2m
C - Stowed Height	6ft 6in	1.99m
E - Platform Length	5ft 11in	1.8m
F - Platform Width	2ft 4in	0.7m
G - Platform Height	3ft 7in	1.1m
H - Crawler Size (Length × Width)	7ft 12in × 12in	2.43m × 0.3m
I - Max Length w/ Outrigger Extending (Standard)	18ft 3in	5.55m
L - Max Width w/ Outrigger Extending (Standard)	17ft 9in	5.4m
K - Max Length w/ Outrigger Extending (Narrow)	24ft 1in	7.35m
J - Max Width w/ Outrigger Extending (Narrow)	8ft 10in	2.68m
Outrigger Pad Size (Diameter)	9ft × 8ft	0.24m × 0.2m
Approach Angle	19°	
Departure Angle	24°	
<b>Performance</b>		
Platform Capacity	507lb / 728lb (restricted) / 265lb (unrestricted)	230kg / 330kg (restricted) / 120kg (unrestricted)
Drive Speed	1.25mph	2km/h
Gradeability	19.8°/36%	
Allowable Tilting Angle When Driving	8.5°/15%	
Turntable Swing	360° continuous	
Platform Rotation	±90°	
H-Tail Swing	0m	
Max Leveling Angle	13°	
Max Wind Speed	28 mph	12.5m/s
<b>Power</b>		
Engine	Yanmar	
Auxiliary Power	Electric pump	
Hydraulic Tank Capacity	29.1 us gal	110L
<b>Track</b>		
Type	Non-marking rubber track	
<b>Weight</b>		
Gross weight	18519 lb	8400kg
Ground Pressure When Driving	36.9N/m <sup>2</sup>	
Ground Pressure When Working (Standard)	2.80N/m <sup>2</sup>	
Ground Pressure When Working (Narrow)	4.26N/m <sup>2</sup>	
Pressure on Single Outrigger When Working	47KN	



Range of Motion ZX37T

AJ Access Platforms Ltd, Pill Way, Severn Bridge Industrial Estate,  
Caldicot Monmouthshire, NP26 5PU, UK  
Phone: +44 (0) 1291 421 155  
Email: info@accessplatforms.com, sales@accessplatforms.com  
Web: www.accessplatforms.com

[Get Pricing](#)

