

# nifty

# HR21 HYBRID AWD

**SELF PROPELLED  
ACCESS PLATFORM**



**20.80m (68ft 6in)**  
Working height

**12.50m (41ft)**  
Unrestricted working  
outreach at 225kg

**40% Gradeability**  
AWD for rough terrain

**GVW Only 6,400kg**  
Lightest in its class

**Superb Manoeuvrability**  
4m outside turning radius

**SiOPS® as Standard**  
Award winning  
operator protection

**Platform Rotation  
& Fly-Boom**  
Improved access to  
applications

**Hybrid Power**  
Versatile, fuel efficient &  
environmentally conscious



**niftylift.com**



# nifty HR21 HYBRID AWD

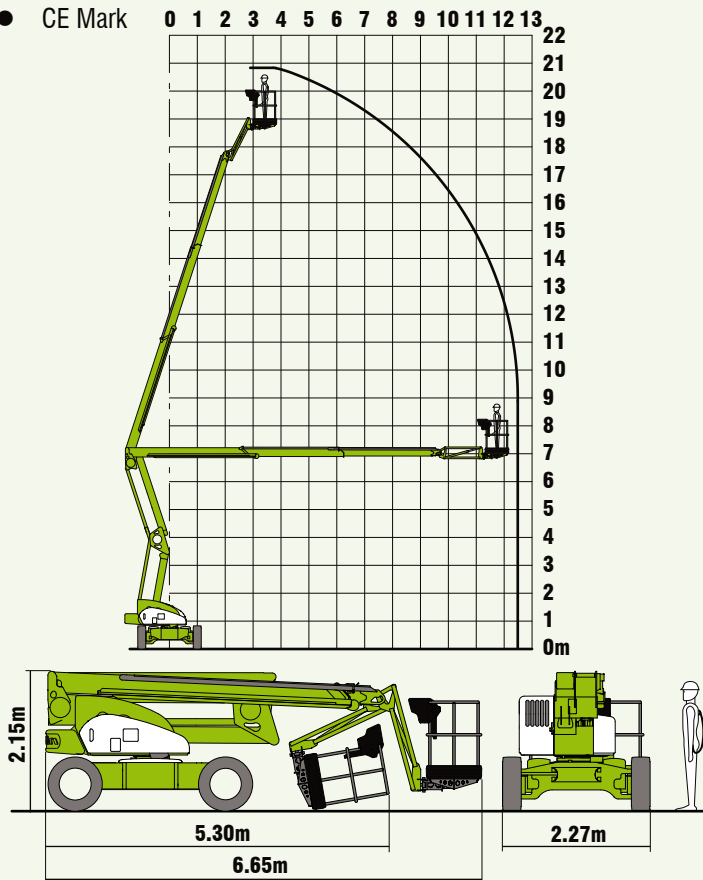
The **Height Rider 21 (HR21) Hybrid All-Wheel-Drive (AWD)** is one of a new generation of environmentally conscious work platforms from Niftylift. Combining advanced power-source technology with versatile AWD, it delivers outstanding performance from a compact and low-weight design.

On Diesel, the **HR21's** revolutionary **Hybrid** system can automatically utilise its electric motor to boost power whenever needed. This allows the **HR21 Hybrid AWD** to operate with a smaller engine, reducing fuel consumption and its exhaust purification system then further reduces CO/NOx, particulates, and noise emissions.

The **HR21 Hybrid AWD** can also operate on battery alone, making it ideal for indoor, quiet or clean applications. **Diesel Re-Gen** re-charges the batteries without a mains power source and a fast charge is achieved whenever the machine is idle and the engine is left running.

## SAFETY FEATURES

- SiOPS®
- Automatic Fail-Safe Brakes
- Solid Tyres
- Manual Recovery with Hand Pump
- Dual Controls (Platform & Base)
- Lock Valves on all Hydraulic Cylinders
- Dual Harness Points
- Tilt Alarm
- CE Mark



The **HR21 Hybrid AWD** also incorporates **ToughCage** and **SiOPS®** technologies. A tough impact resistant composite base and larger cross-section steel give the **ToughCage** strength and durability, while **SiOPS®** offers additional operator protection.



## SPECIFICATIONS

<b>Working Height</b>	20.80m	68ft 6in
<b>Platform Height</b>	18.80m	62ft
<b>Working Outreach</b>	12.50m	41ft
<b>Slew</b>	360°	
<b>Fly-Boom Arc</b>	150°	
<b>Width</b>	2.27m	7ft 5in
<b>Height</b>	2.15m	7ft
<b>Length - Stowed</b>	5.30m	17ft 5in
<b>- Overall</b>	6.65m	21ft 10in
<b>Minimum Weight</b>	6,400kg*	14,110lbs*
<b>Turning Radius - Outside</b>	4.00m	13ft
<b>Platform Rotation</b>	100°	
<b>Platform Capacity</b>	225kg	500lbs
<b>Platform Size</b>	1.80m x 0.85m	5ft 11in x 2ft 9in
<b>Drive Speed - 2x4</b>	4.5kmph	2.8mph
<b>- 4x4</b>	2.25kmph	1.4mph
<b>Gradeability</b>	20% (2x4)	40% (4x4)
<b>Power System</b>	Hybrid (Battery & Diesel) Kubota 722 (18Hp)	

\* Weights may vary according to specification, please confirm before ordering.

Due to a policy of continuing development and improvement, Niftylift reserves the right to change any specification without notice. Please confirm exact specification before ordering.



**AJ Access Platforms Ltd**  
Pill Way, Severn Bridge Industrial Estate,  
Caldicot Monmouthshire, NP26 5PU, UK  
Phone: +44 (0) 1291 421 155  
Email: info@accessplatforms.com, sales@accessplatforms.com  
Web: www.accessplatforms.com

IS-05

**Manufacturers of trailer mounted,  
self propelled and vehicle mounted platforms.**



**NIFTYLIFT LTD**  
Fingle Drive  
Stonebridge  
Milton Keynes  
MK13 0ER  
England

www.niftylift.com

e.mail: info@niftylift.com

Tel.: +44 (0)1908 223456

Fax.: +44 (0)1908 312733