

Self-Propelled Articulating Booms

Z™ -60/37DC & Z™ -60/37FE

Specifications

Model	Z-60/37DC & Z-60/37FE	
Measurements	Metric	US
Working height maximum*	20.16 m	65 ft 7 in
Platform height maximum	18.16 m	59 ft 7 in
Horizontal reach maximum	11.15 m	36 ft 7 in
Up and over clearance maximum	7.39 m	24 ft 3 in
A Platform length - 8 ft / 6 ft model	0.91 m / 0.76 m	3 ft / 2 ft 6 in
B Platform width - 8 ft / 6 ft model	2.44 m / 1.83 m	8 ft / 6 ft
C Height - stowed	2.54 m	8 ft 4 in
Height - transport (jib tucked under)	2.62 m	8 ft 7 in
D Length - stowed	8.15 m	26 ft 9 in
Length - transport (jib tucked under)	6.30 m	20 ft 8 in
E Width	2.49 m	8 ft 2 in
A Wheelbase	2.49 m	8 ft 2 in
A Ground clearance - center	0.33 m	1 ft 1 in

Productivity

Lift capacity	227 kg	500 lbs
Platform rotation	160°	160°
Vertical jib rotation	135°	135°
Turntable rotation	355° non-continuous	
Turntable tailswing - riser up	0.58 m	1 ft 11 in
Turntable tailswing - riser down	0.81 m	2 ft 8 in
Drive speed - stowed	6.44 km/h	4.0 mph
Drive speed - raised**	1.09 km/h	0.68 mph
Gradeability - 4WD - stowed***	45%	45%
Turning radius - inside	2.51 m	8 ft 3 in
Turning radius - outside	5.69 m	18 ft 8 in
Controls	24V DC proportional	
Tyres	355/55D 625	

Power

Drive system	34 V 3-Phase AC	
Power source	48 V DC (eight 6V batteries)	
	390 Ah capacity (FLA standard on DC)	
	415 Ah capacity (AGM standard on FE)	
	24.8 hp (18.5kW) Kubota D1105 T4f driven AC generator (FE only)	
Auxiliary power unit	12V DC	12V DC
Hydraulic tank capacity	68.14 L	18 gal
Fuel tank capacity	64.35 L	17 gal

Sound & Vibration Levels

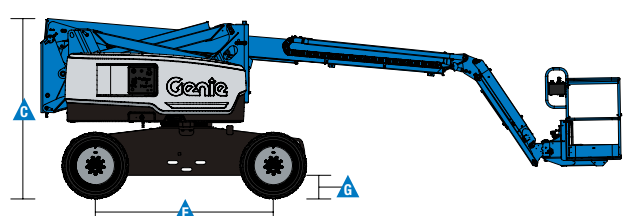
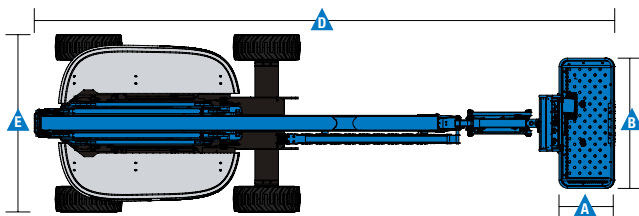
Sound pressure level (ground workstation)	70 dBA (DC) / 77 dBA (FE)
Sound pressure level (platform workstation)	70 dBA (DC) / 72 dBA (FE)
Vibration	0.553 m/s ² (1.81 ft/s ²)

Weight****

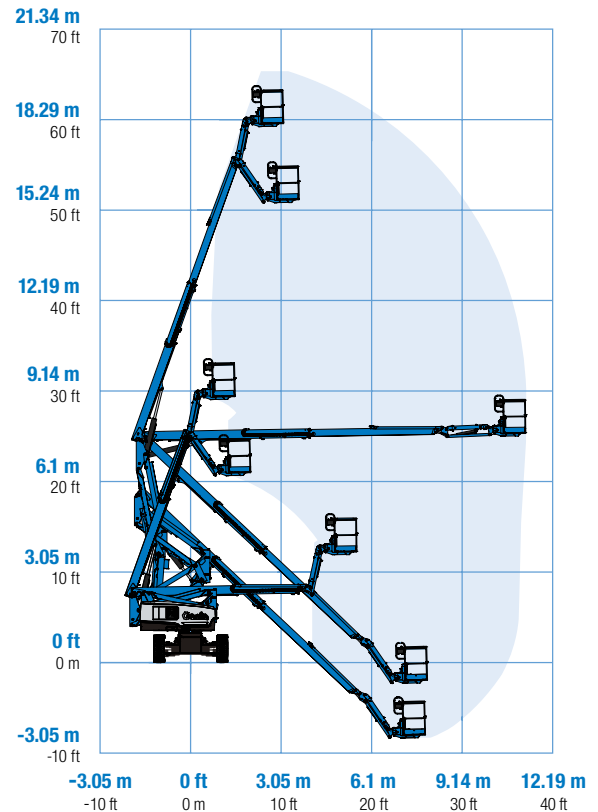
Z-60/37DC	7,530 kg	16,600 lbs
Z-60/37FE	7,756 kg	17,100 lbs

Standards Compliance

EU Directives: 2006/42/EC - Machinery (harmonized standard EN280); 2004/108/EC (EMC); 2000/14/EC (Outdoor Noise)



Range Of Motion Z-60/37DC & Z-60/37FE



* The metric equivalent of working height adds 2 m to platform height. U.S. adds 6 ft to platform height.
 ** In lift mode (platform raised), the machine is designed to operate on firm, level surfaces only.
 *** Gradeability applies to driving on slopes. See operators manual for details regarding slope ratings.
 **** Weight will vary depending on options and/or country standards.

Features

Standard Features	Easily Configured To Meet Your Needs	Options & Accessories
<p>Measurements</p> <ul style="list-style-type: none"> • 20.16 m (65 ft 7 in) working height • 11.15 m (36 ft 7 in) horizontal reach • 7.40 m (24 ft 3 in) up and over clearance • Up to 227 kg (500 lbs) lift capacity <p>Productivity</p> <ul style="list-style-type: none"> • 1.52 m (5 ft) jib boom with 135° working range • Digital hour meter with battery charge indicator and diagnostic readout • 4 Wheel AC electric drive system • Variable speed high efficiency hydraulic power unit • Self-leveling platform • Hydraulic platform rotation • Proportional joystick controls • Telematics Ready Connector • Thumb rocker steering • Drive enable • AC power cord to platform • Horn • Hour meter • Tilt alarm • Descent & travel alarms • Flashing beacon • Tilt cut-out • 355° non-continuous turntable rotation • Locking turntable covers • Positive traction drive • Dual parallelogram for vertical wall tracking • Certified load sensor • Lift Guard™ Contact Alarm <p>Power</p> <ul style="list-style-type: none"> • 48 V DC battery pack (390Ah FLA standard on DC) • 48 V DC battery pack (415Ah AGM standard on FE) • 12V DC auxiliary power • 25A temperature compensated smart charge system • Battery charge indicator • Low battery voltage interrupt 	<p>Platform Options</p> <ul style="list-style-type: none"> • Steel 1.83 m (6 ft) dual entry with side swing gate (standard) • Steel 2.44 m (8 ft) tri entry with side swing gate <p>Jib</p> <ul style="list-style-type: none"> • 1.52 m (5 ft) jib boom <p>Engine Options</p> <ul style="list-style-type: none"> • 18.5 kW (24.8 hp) Kubota T4 diesel <p>Drive Options</p> <ul style="list-style-type: none"> • 4WD Electric AC (standard) <p>Axle Options</p> <ul style="list-style-type: none"> • Active oscillation (standard on 4WD) <p>Tyre Options</p> <ul style="list-style-type: none"> • Rough terrain foam-filled (standard on FE) • Rough terrain non-marking foam filled (standard on DC) 	<p>Productivity Options</p> <ul style="list-style-type: none"> • Half mesh platform inserts • Platform top auxiliary rail • Air line to platform • Power to platform (incl. plug, socket and ground fault interrupt leakage on request) • Work lights package (2 on chassis, 2 on platform) • Dual axis joystick steering • Biodegradable hydraulic oil • Aircraft protection package (1.83 m platform front entry only): platform foam padding and padded disable system • Hostile environment kit: cylinder bellows, boom wiper seals platform and ground control box covers • Track & Trace ⁽¹⁾ (GPS unit providing machine location & operating information) • Panel cradle package • Lockable platform control box covers • Tow package • Tool tray <p>Power Options</p> <ul style="list-style-type: none"> • 2000W 120V/60Hz, 240V/50Hz or 110V/50Hz power inverter • AGM maintenance-free batteries (standard on FE) • Low temperature cut-out module



⁽¹⁾ Includes a first 2 years subscription



AJ Access Platforms Ltd

Pill Way, Severn Bridge Industrial Estate, Caldicot Monmouthshire, NP26 5PU, United Kingdom. Phone: +44 (0) 1291 421 155 Email: info@accessplatforms.com, sales@accessplatforms.com

Worldwide Manufacturing And Distribution

Australia · Brazil · Caribbean · Central America · China · France · Germany · Italy · Japan · Korea · Mexico · Russia · Southeast Asia · Spain · Sweden · United Arab Emirates · United Kingdom · United States

Product specifications and prices are subject to change without notice or obligation. The photographs and/or drawings in this document are for illustrative purposes only. Refer to the appropriate Operator's Manual for instructions on the proper use of this equipment. Failure to follow the appropriate Operator's Manual when using our equipment or to otherwise act irresponsibly may result in serious injury or death. The only warranty applicable to our equipment is the standard written warranty applicable to the particular product and sale and we make no other warranty, express or implied. Products and services listed may be trademarks, service marks or trade names of Terex Corporation and/or their subsidiaries in the USA and many other countries. Genie is a registered trademark of Terex South Dakota, Inc. © 2017 Terex Corporation.