

### Specifications

Model	SX-135 XC	
Measurements	Metric	US
Working height maximum*	43.15 m	141 ft
Platform height maximum	41.15 m	135 ft
Horizontal reach maximum	27.43 m	90 ft
Below ground reach	6.00 m	19 ft 8 in
<b>A</b> Platform length	0.91 m	3 ft
<b>B</b> Platform width	2.44 m	8 ft
<b>C</b> Height - stowed	3.05 m	10 ft
<b>D</b> Length - stowed	19.76 m	64 ft 10 in
Length - transport (jib tucked under)	13.28 m	43 ft 7 in
<b>E</b> Width - axles retracted	2.49 m	8 ft 2 in
Width - axles extended	3.94 m	12 ft 11 in
<b>A</b> Wheelbase - axles retracted	4.11 m	13 ft 6 in
Wheelbase - axles extended	4.11 m	13 ft 6 in
<b>G</b> Ground clearance - center	0.38 m	1 ft 3 in

### Productivity

Lift capacity	300 kg / 454 kg	660 lb / 1,000 lb
Platform rotation	160°	160°
Vertical jib rotation - up/down	70° / 55°	70° / 55°
Turntable rotation	360° continuous	
Turntable tailswing - axle retracted	1.14 m	3 ft 9 in
Turntable tailswing - axle extended	1.70 m	5 ft 7 in
Drive speed - stowed	4.3 km/h	2.7 mph
Drive speed - out of stowed	0.65 km/h	0.4 mph
Gradeability - stowed**	35%	35%
Turning radius - axle retracted: inside	8.03 m	26 ft 4 in
outside	9.96 m	32 ft 8 in
Turning radius - axle extended: inside	2.90 m	9 ft 6 in
outside	6.17 m	20 ft 3 in
Controls	12 V DC proportional	
Tyres	445D50/710HD	

### Power

Power source	Deutz TCD2.2 L3 turbo diesel 3-cylinder 74hp (55 kW) Stage V Deutz TD 2011 L04i turbo diesel 4-cylinder 74hp (55kW) Stage IIIA	
Auxiliary power unit	12 V DC	12 V DC
Hydraulic tank capacity	227 L	60 gal
Fuel tank capacity	151 L	40 gal

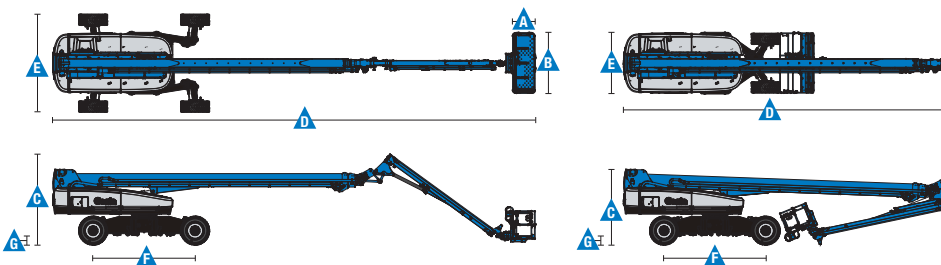
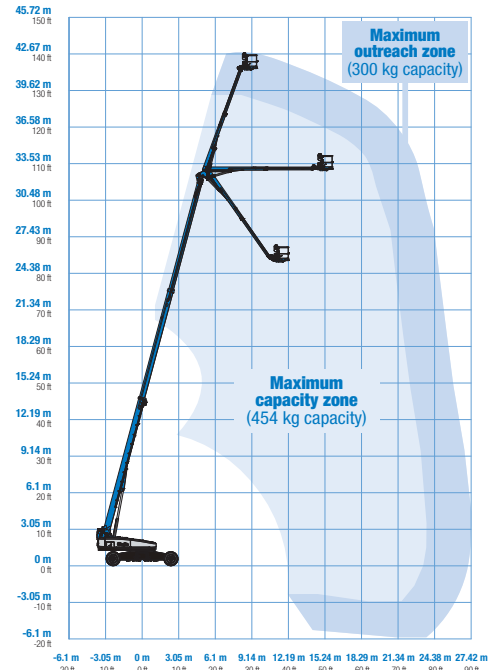
### Weight\*\*\*

4WD	21,546 kg	47,500 lb
-----	-----------	-----------

### Standards Compliance

EU Directives: 2006/42/EC - Machinery  
(harmonized standard EN 280:2013+A1:2015);  
2004/108/EC (EMC); 2000/14/EC (Outdoor Noise)

### Range Of Motion SX-135 XC



\* The metric equivalent of working height adds 2 m to platform height. U.S. adds 6 ft to platform height.

\*\* Gradeability applies to driving on slopes. See operator's manual for details regarding slope ratings.

\*\*\* Weight will vary depending on options and/or country standards.

## Features

Standard Features	Easily Configured To Meet Your Needs	Options & Accessories
-------------------	--------------------------------------	-----------------------

### Measurements

#### SX-135 XC

- 43.15 m (141 ft) working height
- 27.43 m (90 ft) horizontal reach
- 300 kg (660 lb) unrestricted and 454 kg (1,000 lb) restricted lift capacity

### Productivity

- Self-leveling platform
- 160° Hydraulic platform rotation
- Proportional joystick controls
- Hydraulic oil cooler
- Thumb rocker steering
- Drive enable
- Chassis tilt drive function cut-out
- AC power to platform
- Horn
- Hour meter
- Tilt alarm
- Descent alarm
- Alarm package
- 360° continuous turntable rotation
- Positive traction 4WD
- Two speed wheel motors
- Four wheel high angle steer
- Four steering modes: front, rear, crab and coordinated
- On board full diagnostics and engine monitoring display
- Ground control box cover
- Telematics-Ready Connector
- Hydraulic oil cooler
- Lift Connect™ Telematics
- Lift Guard™ Contact Alarm
- Lift Tool™ Work Tray

### Power

- All engines are emissions compliant
- 12 V DC auxiliary power
- Anti-restart engine protection
- Auto engine fault shutdown
- Intake air heater
- Engine gauge display

### Platform Options

- Steel 1.83 m (6 ft) dual-entry platform with side swing gate
- Steel 2.44 (8 ft) tri-entry platform with side swing gate (standard)

### Jib

- 5.48 m (18 ft) to 9.14 m (30 ft) Telescoping Jib-Extend™

### Engine Options

- Deutz TCD2.2 L3 turbo diesel 3-cylinder 74hp (55 kW) Stage V
- Deutz TD 2011 L04i turbo diesel 4-cylinder 74hp (55kW) Stage IIIA

### Drive/Steer

- 4 x 4 (standard)
- 4 wheel steer (standard)

### Axles

- Mini X-chassis™ extendable axles (standard)

### Tyres

- Rough terrain foam-filled (standard)



### Options & Accessories

### Productivity Options

- Half-mesh platform inserts
- Platform auxiliary top rail
- Hostile environment package<sup>(1)</sup>
- Dual axis joystick steering
- Work lights package (2 platform mounted work lights)<sup>(1)</sup>
- Biodegradable Hydraulic Oil
- Airline to Platform<sup>(1)</sup>
- Aircraft Protection Kit <sup>(1,4)</sup>: platform foam padding and padded disable system
- Chassis tilt lift function cut-out
- Lockable platform control box cover
- Track & Trace<sup>(2)</sup> (GPS unit providing machine location & operating information)
- Operator Protective Structure <sup>(3)</sup>
- Genie® Tech Pro™ Link Hand-held Diagnostics Device

### Power Options

- AC generator packages (110V/60Hz, 110V/50Hz, 240V/50Hz) 3000W, hydraulically driven
- Cold Weather Package<sup>(1)</sup>
- Diesel scrubber/spark arrestor muffler (catalytic muffler), Stage IIIA engine only
- Intake air pre-cleaner

<sup>(1)</sup> Factory-fit option only

<sup>(2)</sup> Includes a first 2 years subscription

<sup>(3)</sup> Aftermarket only

<sup>(4)</sup> Requires 1.83 m (6 ft) platform, not available with any other platform, nor platform option



### AJ Access Platforms Ltd

Pill Way, Severn Bridge Industrial Estate, Caldicot Monmouthshire, NP26 5PU, United Kingdom. Phone: +44 (0) 1291 421 155 Email: [info@accessplatforms.com](mailto:info@accessplatforms.com), [sales@accessplatforms.com](mailto:sales@accessplatforms.com)

### Worldwide Manufacturing And Distribution

Australia · Brazil · Caribbean · Central America · China · France · Germany · Italy · Japan · Korea · Mexico · Russia · Southeast Asia · Spain · Sweden · United Arab Emirates · United Kingdom · United States

Product specifications and prices are subject to change without notice or obligation. The photographs and/or drawings in this document are for illustrative purposes only. Refer to the appropriate Operator's Manual for instructions on the proper use of this equipment. Failure to follow the appropriate Operator's Manual when using our equipment or to otherwise act irresponsibly may result in serious injury or death. The only warranty applicable to our equipment is the standard written warranty applicable to the particular product and sale and we make no other warranty, express or implied. Products and services listed may be trademarks, service marks or trade names of Terex Corporation and/or their subsidiaries in the USA and many other countries. Genie is a registered trademark of Terex South Dakota, Inc. © 2020 Terex Corporation.

