



**JLG® ULTRA SERIES BOOM LIFTS**

**JLG®**

# JLG® ULTRA BOOMS REACHING OUT

Steel mills and chemical plants, airports, convention centers, shipyards and heavy construction. The JLG® Ultra Series boom lifts are designed for rugged job sites that demand you work higher and reach farther. With five decades of experience, JLG knows the territory. You need the power, reliability and versatility to do the impossible every day. And come back and do it again tomorrow.

JLG Ultra Series boom lifts get you there. They're built from 100,000 psi steel—40% stronger than the competition, and they'll lift 1,000 pounds, making them the most powerful booms in the industry.

When you're working twelve stories high or more, you want a machine that gives you confidence to do your best work; that's built to perform and that's designed to meet any challenge—that's the JLG Ultra Series.

***"No other machine allows us to reach as high or as far."***





**JLG ULTRA BOOM 1200SJP**

1200SJP





## MAXIMUM HEIGHT, REACH AND POWER

When your job demands both height and reach, enlist the Ultra Series Articulating models. The new 1500AJP provides 60 ft of up and over height and 75 ft of outreach while the 1250AJP has 63 ft of outreach, making these models ideal for applications that require high-reach versatility. The exclusive QuikStik® boom design provides faster cycle speeds from ground to full elevation—115 seconds for 1250AJP and 180 seconds for the 1500AJP. And the 1250AJP comes with the only oscillating axle in their boom class, giving you surprising mobility in an ultra-sized package.

*“The larger platform gives us more room for tools and extra workers.”*

## FEATURES



### Unmatched Range of Motion

A huge work envelope—up to 2.6 million cubic foot work envelope means you can access otherwise inaccessible areas.



### Extendable Axles

Cylinder-deployed axles allow these boom lifts to grow from their transport width of 8' 2" to as wide as 16' 6" for unmatched rigidity and stability.



### JibPLUS®

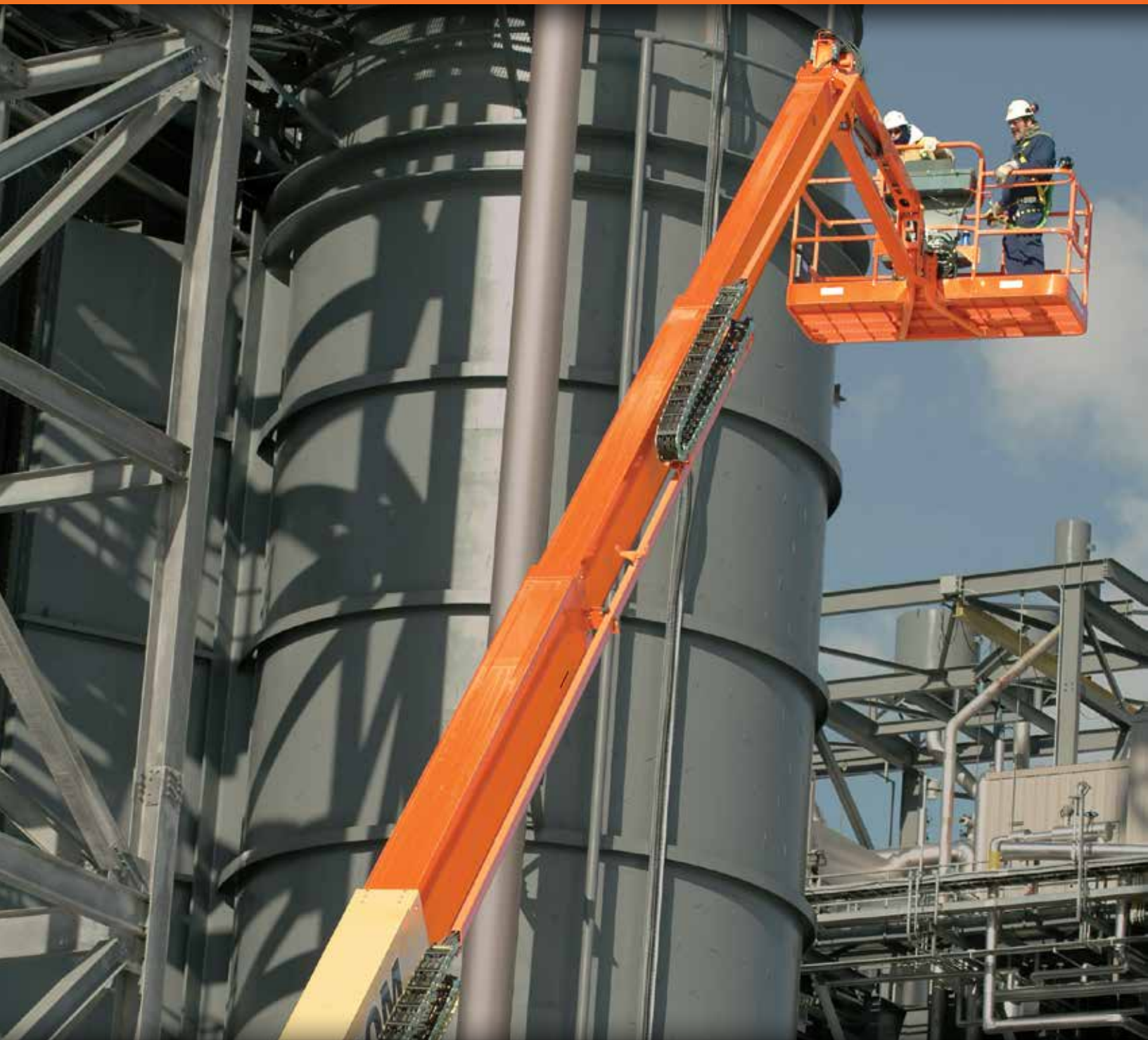
JibPLUS provides select Ultra Series models with up to 180 degrees of horizontal maneuverability for added versatility and improved productivity.



### Four-Wheel Steering

All of our Ultra Series boom lifts offer 3 steering modes to meet the needs of diverse and ever-changing job sites.

Ultra Series  
TELESCOPIC BOOM LIFTS



**Strong 100,000 PSI Steel**

The high-quality steel of the boom ensures greater durability and stability.



**Larger Work Envelope**

With more outreach above 50 ft, you have added access and flexibility.

## TAKING PRODUCTIVITY TO GREATER HEIGHTS

Dominate the job site with the JLG® Ultra Series. When you're facing tall challenges, you want a solid machine that goes above and beyond the day's demands. The rugged boom gives you the confidence and support you need to handle 1,000 lb capacity. The exclusive controlled arc regulates speeds at the edges of the work envelope so that you feel the same velocity in all positions for enhanced comfort.

*"The high capacity platforms raise our productivity, and level of work."*



### Oscillating Axle

Standard on all Telescopic Ultra Booms\*, oscillating axle and full-time four-wheel drive provide superior traction.

*\*Except 1850SJ*



### SkyPower®

A 7,500-watt on-board generator gives you the extra boost you need.

## EXTEND YOUR REACH WITH THE 1500SJ

The Model 1500SJ is one of the largest self-propelled telescopic booms available from JLG—the first straight boom lift that takes you to 150 ft without an oversized load permit (over weight permit is required for highway transportation). The 1500SJ features a telescoping jib for greater work envelope flexibility and additional outreach at elevation.

*“At 150 ft, I want to focus on my work with confidence. The Ultra Series lets me do just that.”*



### More Capacity

With a dual 1,000/500 lb capacity, the platform can handle more workers, tools or materials.



### Greater Reach

The JibPLUS® boom adds an extra 30 ft of outreach.\*

\*Capacity restricted to 500 lb (227 kg) when the jib is in side-swing mode. JibPLUS for transport only for 1500SJ.





**More Maneuverability**

Full-time four-wheel drive gets you over rough terrain.



**SkyGuard SkyLine™**

Enhanced control panel protection comes standard with SkyGuard SkyLine™.

## GO WHERE NO BOOM HAS GONE BEFORE WITH CONFIDENCE AT 185 FT

Introducing the highest reaching telescopic, self-propelled boom lift to ever hit the market. The 1850SJ features 19 stories of working height and a brand new chassis. The 1850SJ is much faster to full height, so operators can spend more time working and less time positioning the boom. The axles take approximately one minute to extend or retract. They're able to pivot in and out and do not telescope like extendable axles on other Ultra Series boom lifts.

### Greater Work Envelope

Telescoping jib and five section boom provides 2.9 million cubic feet of work area and greater ability to reach up and over. Plus, the operator can move just the jib, rather than the whole machine, for greater maneuverability and more precise positioning.

*"I've never felt more confident  
working from a machine of this caliber."*



### New Chassis

Each axle is equipped with a linear sensor that works with the rotary sensor to keep steer wheels in the proper position.



### Ease of Transport

No oversized load permit is needed (over weight permit is required for highway transportation).



### LCD Screen

An LCD screen shows operators where they are in the work envelope along with other useful information.



### Travel and Gradeability

Travel is permitted with platform at full elevation and features 40% gradeability in the stowed position.

## WORKSTATION IN THE SKY® ACCESSORIES

Turn your engine powered aerial work platform into an integrated work tool with Workstation in the Sky® accessories. These packages are designed to increase your productivity, conserve platform space and improve working conditions.



### SKYPOWER® PACKAGE

Machines with the SkyPower® system are equipped with a self-contained 7500W continuous output generator with a power cable, installed in the power track. In addition, it provides self-contained 110V-AC, 220V-AC and 3-phase power to run other accessories and hand tools.



### SKYGLAZIER® PACKAGE

The first and only factory-approved glass and panel tray. Panels are protected from damage and productivity is improved while operator fatigue is reduced. And with JLG® 1,000 lb capacity, the basket can hold multiple workers and larger glass panels.



### SKYCUTTER® PACKAGE

Eliminating the danger of tanks and draping hoses, SkyCutter® cuts faster and cleaner with an on-board Miller® Spectrum 375 Cutmate plasma cutter.



### PIPE RACK ACCESSORY

Manufacturer-approved pipe racks provide positive retention of materials while storage outside the platform helps prevent rail damage and optimizes space.



### SKYWELDER® PACKAGE

With a 280 amp Miller® CST 280 welder tucked into the SkyPower platform, space is conserved while providing stick and TIG capability. The SkyWelder® package eliminates potentially dangerous leads hanging over the rails and the unnecessary cost of a stand-alone welder and power supply.



### BOLT-ON EXTERNAL FALL ARREST

Experience full 180 degree access around and 6' beyond the platform with the Bolt-On External Fall Arrest System. The slim design bolts on externally with ease and can be transferred to other JLG platforms in your fleet.



## PUTTING YOUR WORK ABOVE EVERYTHING

When it comes to JLG® Support, it's all about you. Your productivity. Your profitability. Your uptime. From the purchase of your first piece of equipment straight through to the training, parts and maintenance that follows.



### ■ Customer Support Contact Center

You can be assured we'll be giving an all-out effort to support you. Just think of us as your personal on-call, full-service support team. We make it happen. Period.

### ■ Financial Solutions

Maximizing your profits. Preserving your cash flow. Let our financing specialists help choose the program designed specifically for your needs.

### ■ Aftermarket Parts

Keep your equipment running at peak performance with genuine replacement parts, accessories, attachments, rebuilt and competitive parts all from one source — JLG.

### ■ Training

Knowing your equipment inside and out results in higher productivity on the job. Our instructor-led courses give you the hands-on time you need to successfully operate equipment.

### ■ Service Centers

Your needs. Your uptime. JLG is on the job to fulfill your every need, from repair, reconditioning, same-day parts and much more. We're here to support you.

### ■ Pre-Owned Equipment

As a high-value alternative to purchasing new equipment, you can search our used equipment inventory of pre-owned JLG and competitor products.

# Ultra Series SPECIFICATIONS

## 1250AJP

### Ultra Series Articulating Boom Lifts Reach Specifications

|                                  |                       |
|----------------------------------|-----------------------|
| Platform Height                  | 125 ft (38.1 m)       |
| Horizontal Reach                 | 63 ft 2 in. (19.25 m) |
| Up and Over Height               | 60 ft 6 in. (18.44 m) |
| Swing                            | 360° Continuous       |
| Platform Capacity — Restricted   | 1,000 lb (454 kg)     |
| Platform Capacity — Unrestricted | 500 lb (227 kg)       |
| Platform Rotator                 | 180°                  |
| JibPLUS®                         |                       |
| Length                           | 8 ft (2.44 m)         |
| Horizontal Motion <sup>1</sup>   | 125°                  |
| Vertical Motion                  | 130° (+75/-55)        |

### Dimensional Data

|                     |                             |                       |
|---------------------|-----------------------------|-----------------------|
| A. Platform Size    | 36 x 96 in. (0.91 x 2.44 m) |                       |
| B. Overall Width    | Axles Retracted             | 8 ft 2 in. (2.49 m)   |
|                     | Axles Extended              | 12 ft 6 in. (3.81 m)  |
| C. Tailswing        | 3 ft (91 cm)                |                       |
| D. Stowed Height    | 10 ft (3.05 m)              |                       |
| E. Overall Length   | Jib Stowed                  | 37 ft 7 in. (11.45 m) |
|                     | Jib Deployed                | 47 ft 6 in. (14.48 m) |
| F. Wheel Base       | 12 ft 6 in. (3.81 m)        |                       |
| G. Ground Clearance | Axle                        | 12 in. (30 cm)        |
|                     | Chassis                     | 25.5 in. (65 cm)      |
| Weight <sup>2</sup> | 44,000 lb (19,958 kg)       |                       |

### Chassis

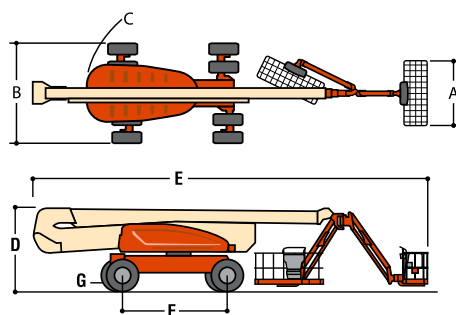
|                               |                                    |                      |
|-------------------------------|------------------------------------|----------------------|
| Max Ground Bearing Pressure*  | 100 psi (7.03 kg/cm <sup>2</sup> ) |                      |
| Drive Speed                   | 3.25 mph (5.2 km/h)                |                      |
| Gradeability                  | 45%                                |                      |
| Turning Radius (Inside)       | Axles Retracted                    | 14 ft 5 in. (4.39 m) |
|                               | Axles Extended                     | 8 ft (2.44 m)        |
| Turning Radius (Outside)      | Axles Retracted                    | 22 ft 6 in. (6.86 m) |
|                               | Axles Extended                     | 19 ft 4 in. (5.89 m) |
| Crab Steer Ratio <sup>3</sup> | 1:1                                |                      |
| Axle Oscillation              | 8 in. (20 cm)                      |                      |
| Tires/Type                    | 445/50D710 Foam Filled             |                      |

### Power Source

|                              |                             |                   |
|------------------------------|-----------------------------|-------------------|
| Diesel Engine                | Deutz TCD2.9L4 Tier 4 Final | 74.2 hp (55.4 kW) |
| Fuel Tank Capacity           |                             | 31 gal (117 L)    |
| Hydraulic Reservoir          |                             | 53 gal (200 L)    |
| Auxiliary Power              |                             | 12V DC            |
| Generator Nominal/Continuous |                             | 7,500 Watt        |

\*Ground bearing pressure applies to standard tires.

- Capacity is limited to 500 lb (227 kg) when JibPLUS is extended horizontally.
- Certain options or country standards increase weight.
- Ratio of forward travel to lateral travel.



### Standard Features

Platform: 36 x 96 in. (0.91 x 2.44 m) Side Entry  
8 ft (2.44 m) JibPLUS® Boom  
Selectable Capacity Envelope  
180° Hydraulic Platform Rotator  
AC Receptacle in the Platform  
5 Degree Tilt Alarm/Indicator Light  
All Motion Alarm  
Swing-Out Engine Tray  
12V DC Auxiliary Power  
Hourmeter  
Control ADE® System  
Full-time 4WD  
3 Selectable Steering Modes  
Drive-out Extendible Axles  
Oscillating Axle  
Proportional Controls  
Gull-Wing Hoods  
445/50D710 Foam Filled Rim Protector Lug Tread Tires  
Platform Console Machine Status Light Panel\*  
Lifting/Tie Down Lugs  
Engine Distress Warning/Shutdown—Selectable via JLG Analyzer  
SkyGuard SkyLine™

### Available Options

Platform: 36 x 72 in. (0.91 x 1.83 m) Side Entry

Fall-Arrest Platform: 36 x 96 in. (0.91 x 2.44 m) Side Entry

Self-Closing Gate  
Light Package<sup>1</sup>

Flashing Beacon

Soft-Touch System Platform  
6 ft/8 ft (1.83 m/2.44 m)

ClearSky (US and Canada only)

Cold Weather Start<sup>2</sup>

Hostile Environment Kit<sup>3</sup>

Mesh to Top Rail

Operator Tool Tray

1. Includes platform mounted work lights and drive/backup lights.

2. Includes glow plugs, battery heater and oil tank heater.

3. Includes console cover, boom wipers and cylinder bellows.

### Accessory Packages

SkyPower® Package

- 7500 Watt Generator
- 240/120V Single Phase
- 240V 3 Phase
- 1/2 in. Air Line to Platform

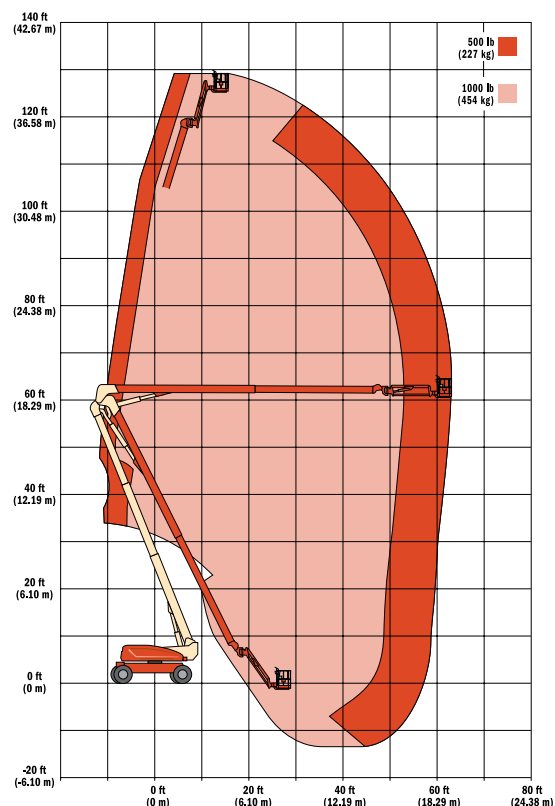
SkyWelder®

SkyCutter®

SkyGlazier®

Pipe Racks

\* Provides indicator lights at platform control console for system distress, fuel level, low fuel, 5 degree tilt light and foot switch status.



1500AJP

Ultra Series Articulating Boom Lifts  
Reach Specifications

|                                  |                   |
|----------------------------------|-------------------|
| Platform Height                  | 150 ft (45.72 m)  |
| Horizontal Reach                 | 75 ft (22.86 m)   |
| Up and Over Height               | 60 ft (18.29 m)   |
| Swing                            | 360° Continuous   |
| Platform Capacity — Restricted   | 1,000 lb (454 kg) |
| Platform Capacity — Unrestricted | 600 lb 272 kg)    |
| Platform Rotator                 | 180°              |
| JibPLUS <sup>®</sup>             |                   |
| Length                           | 8 ft (2.44 m)     |
| Horizontal Motion <sup>1</sup>   | 125°              |
| Vertical Motion                  | 130° (+75/-55)    |

Dimensional Data

|                     |                                      |
|---------------------|--------------------------------------|
| A. Platform Size    | 36 x 96 in. (0.91 x 2.44 m)          |
| B. Overall Width    | Axles Retracted 8 ft 1.5 in. (2.5 m) |
| Overall Width       | Axles Extended 16 ft 6 in. (5 m)     |
| C. Tailswing        | 0                                    |
| D. Stowed Height    | 10 ft 2 in. (3.1 m)                  |
| E. Overall Length   | Jib Stowed 39 ft 8 in. (12.09 m)     |
| Overall Length      | Jib Deployed 49 ft 8 in. (15.1 m)    |
| F. Wheel Base       | Extended 15 ft (4.6 m)               |
|                     | Retracted 17 ft 1.5 in. (5.22 m)     |
| G. Ground Clearance | Axle 9 in. (23 cm)                   |
|                     | Chassis 15.75 in. (40 cm)            |
| Weight <sup>2</sup> | 57,400 lb (26,039 kg)                |

Chassis

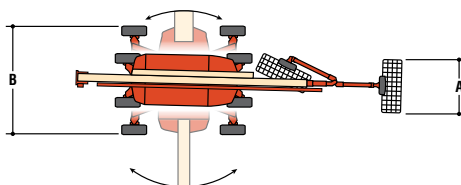
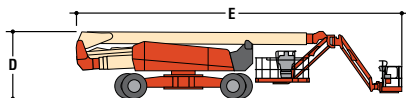
|                               |                                      |
|-------------------------------|--------------------------------------|
| Max Ground Bearing Pressure*  | 120 psi (83.7 kg/cm <sup>2</sup> )   |
| Drive Speed                   | 2.8 mph (4.5 km/h)                   |
| Gradeability                  | 40%                                  |
| Turning Radius (Inside)       | Axles Retracted 23 ft 4 in. (7.11 m) |
|                               | Axles Extended 7 ft 6 in. (2.28 m)   |
| Turning Radius (Outside)      | Axles Retracted 3 ft 3 in. (9.52 m)  |
|                               | Axles Extended 21 ft 8 in. (6.6 m)   |
| Crab Steer Ratio <sup>3</sup> | 1:1                                  |
| Tires/Type                    | 445/50D710 Foam Filled               |

Power Source

|                              |                |                    |
|------------------------------|----------------|--------------------|
| Diesel Engine                | Deutz TCD 3.6L | 99.8 hp (74.45 kW) |
| Fuel Tank Capacity           |                | 45 gal (170 L)     |
| Hydraulic Reservoir          |                | 93 gal (352 L)     |
| Auxiliary Power              |                | 12V DC             |
| Generator Nominal/Continuous |                | 7,500 Watt         |

\*Ground bearing pressure applies to standard tires.

- Capacity is limited to 500 lb (227 kg) when JibPLUS is extended horizontally.
- Certain options or country standards increase weight.
- Ratio of forward travel to lateral travel.



Standard Features

- Platform: 36 x 96 in. (0.91 x 2.44 m) Side Entry
- 8 ft (2.44 m) JibPLUS<sup>®</sup> Boom
- Selectable Capacity Envelope
- 180° Hydraulic Platform Rotator
- AC Receptacle in the Platform
- 5 Degree Tilt Alarm/Indicator Light
- All Motion Alarm
- Swing-Out Engine Tray
- 12V DC Auxiliary Power
- Hourmeter
- Control ADE<sup>®</sup> System
- Full-time 4WD
- 3 Selectable Steering Modes
- Drive-out Extendible Axles
- Proportional Controls
- Gull-Wing Hoods
- 445/50D710 Foam Filled Rim Protector Lug Tread Tires
- Platform Console Machine Status Light Panel\*
- Lifting/Tie Down Lugs
- Engine Distress Warning/Shutdown—Selectable via JLG Analyzer
- SkyGuard SkyLine™
- Control Console

Available Options

- Platform: 36 x 72 in. (0.91 x 1.83 m) Side Entry
- Fall-Arrest Platform: 36 x 96 in. (0.91 x 2.44 m) Side Entry

- Self-Closing Gate
- Light Package<sup>1</sup>
- Flashing Beacon
- Soft-Touch System Platform 6 ft/8 ft (1.83 m/2.44 m)
- ClearSky (US and Canada only)
- Cold Weather Start<sup>2</sup>
- Hostile Environment Kit<sup>3</sup>
- Mesh to Top Rail
- Operator Tool Tray

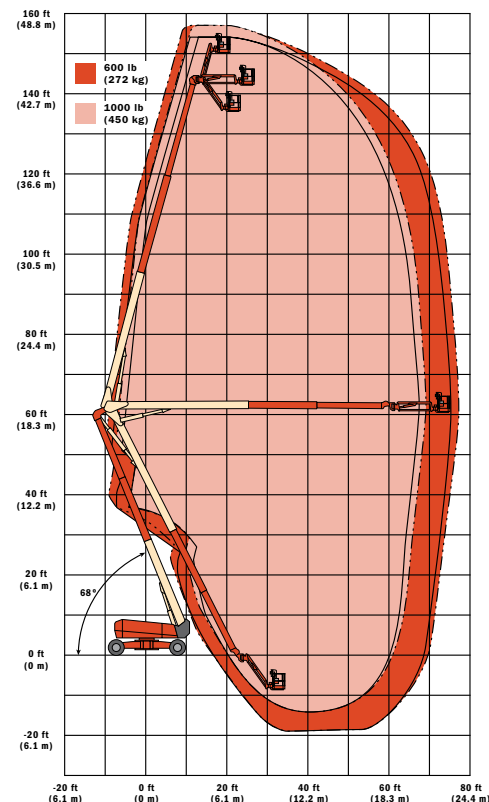
- Includes platform mounted work lights and drive/backup lights.
- Includes glow plugs, battery heater and oil tank heater.
- Includes console cover, boom wipers and cylinder bellows.

Accessory Packages

- SkyPower<sup>®</sup> Package
  - 7500 Watt Generator
    - 240/120V Single Phase
    - 240V 3 Phase
  - 1/2 in. Air Line to Platform

- SkyWelder<sup>®</sup>
- SkyCutter<sup>®</sup>
- SkyGlazier<sup>®</sup>
- Pipe Racks

\* Provides indicator lights at platform control console for system distress, fuel level, low fuel, 5 degree tilt light and foot switch status.



# Ultra Series SPECIFICATIONS

## 1200SJ<sup>2</sup>

### Ultra Series Telescopic Boom Lifts Reach Specifications

|                                  |                   |
|----------------------------------|-------------------|
| Platform Height                  | 120 ft (36.58 m)  |
| Horizontal Reach                 | 75 ft (22.86 m)   |
| Up and Over Height               | —                 |
| Swing                            | 360° Continuous   |
| Platform Capacity — Restricted   | 1,000 lb (454 kg) |
| Platform Capacity — Unrestricted | 500 lb (227 kg)   |
| Platform Rotator                 | 180°              |
| JibPLUS <sup>®</sup>             |                   |
| Length                           | 8 ft (2.44 m)     |
| Horizontal Motion <sup>1</sup>   | 180°              |
| Vertical Motion                  | 130° (+75/-55)    |

### Dimensional Data

|                     |                 |                             |
|---------------------|-----------------|-----------------------------|
| A. Platform Size    |                 | 36 x 96 in. (0.91 x 2.44 m) |
| B. Overall Width    | Axles Retracted | 8 ft 2 in. (2.49 m)         |
| Overall Width       | Axles Extended  | 12 ft 6 in. (3.81 m)        |
| C. Tailswing        |                 | 5 ft 6 in. (1.67 m)         |
| D. Stowed Height    |                 | 10 ft (3.05 m)              |
| E. Overall Length   | Jib Stowed      | 34 ft 11 in. (10.64 m)      |
| Overall Length      | Jib Deployed    | 44 ft 10.25 in. (13.67 m)   |
| F. Wheel Base       |                 | 12 ft 6 in. (3.81 m)        |
| G. Ground Clearance | Axle            | 12 in. (30 cm)              |
| Chassis             |                 | 25.5 in. (65 cm)            |
| Weight <sup>2</sup> |                 | 40,900 lb (18,552 kg)       |

### Chassis

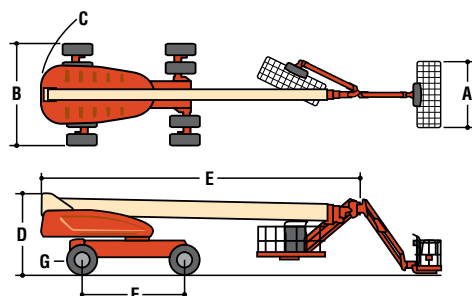
|                               |                 |                                  |
|-------------------------------|-----------------|----------------------------------|
| Max Ground Bearing Pressure*  |                 | 99 psi (7.0 kg/cm <sup>2</sup> ) |
| Drive Speed                   |                 | 3.25 mph (5.2 km/h)              |
| Gradeability                  |                 | 45%                              |
| Turning Radius (Inside)       | Axles Retracted | 14 ft 5 in. (4.39 m)             |
|                               | Axles Extended  | 8 ft (2.44 m)                    |
| Turning Radius (Outside)      | Axles Retracted | 22 ft 6 in. (6.86 m)             |
|                               | Axles Extended  | 19 ft 4 in. (5.89 m)             |
| Crab Steer Ratio <sup>3</sup> |                 | 1:1                              |
| Axle Oscillation              |                 | 12 in. (30 cm)                   |
| Tires/Type                    |                 | 445/50D710 Foam Filled           |

### Power Source

|                     |                             |                   |
|---------------------|-----------------------------|-------------------|
| Diesel Engine       | Deutz TCD2.9L4 Tier 4 Final | 74.2 hp (55.4 kW) |
| Fuel Tank Capacity  |                             | 31 gal (117 L)    |
| Hydraulic Reservoir |                             | 55 gal (208 L)    |
| Auxiliary Power     |                             | 12V DC            |
| Generator           |                             | 7500 Watt         |

\*Ground bearing pressure applies to standard tires.

- Capacity is limited to 500 lb (227 kg) when JibPLUS is extended horizontally.
- Certain options or country standards increase weight.
- Ratio of forward travel to lateral travel.



### Standard Features

Platform: 36 x 96 in. (0.91 x 2.44 m) Side Entry  
8 ft (2.44 m) JibPLUS<sup>®</sup> Boom  
Selectable Capacity Envelope  
180° Hydraulic Platform Rotator  
AC Receptacle in the Platform  
5 Degree Tilt Alarm/Indicator Light  
All Motion Alarm  
Swing-Out Engine Tray  
12V DC Auxiliary Power  
Hourmeter  
Control ADE<sup>®</sup> System  
Full-time 4WD  
3 Selectable Steering Modes  
Drive-out Extendible Axles  
Oscillating Axle  
Proportional Controls  
Gull-Wing Hoods  
445/50D710 Foam Filled Rim Protector Lug Tread Tires  
Platform Console Machine Status Light Panel\*  
Lifting/Tie Down Lugs  
Engine Distress Warning/Shutdown—Selectable via JLG Analyzer  
SkyGuard SkyLine™

### Available Options

Platform: 36 x 72 in. (0.91 x 1.83 m) Side Entry

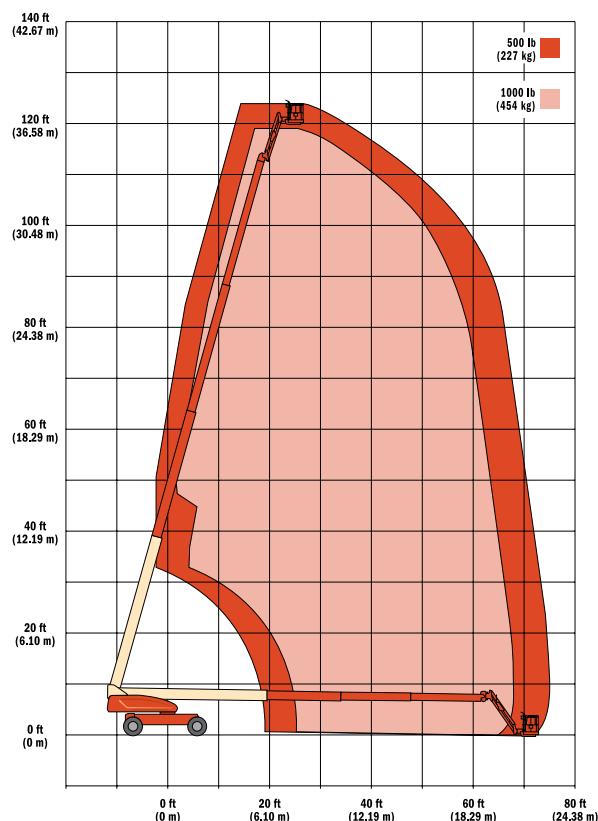
Fall-Arrest Platform: 36 x 96 in. (0.91 x 2.44 m) Side Entry  
Self-Closing Gate  
Light Package<sup>1</sup>  
Flashing Beacon  
Soft-Touch System Platform 6 ft/8 ft (1.83 m/2.44 m)  
ClearSky (US and Canada only)  
Cold Weather Start<sup>2</sup>  
Hostile Environment Kit<sup>3</sup>  
Mesh to Top Rail  
Operator Tool Tray

- Includes platform mounted work lights and drive/backup lights.
- Includes glow plugs, battery heater and oil tank heater.
- Includes console cover, boom wipers and cylinder bellows.

### Accessory Packages

SkyPower<sup>®</sup> Package  
7500 Watt Generator  
· 240/120V Single Phase  
· 240V 3 Phase  
1/2 in. Air Line to Platform  
SkyWelder<sup>®</sup>  
SkyCutter<sup>®</sup>  
SkyGlazier<sup>®</sup>  
Pipe Racks

\* Provides indicator lights at platform control console for system distress, fuel level, low fuel, 5 degree tilt light and foot switch status.





1350SJ<sup>P</sup>

Ultra Series Telescopic Boom Lifts  
Reach Specifications

|                                  |                   |
|----------------------------------|-------------------|
| Platform Height                  | 135 ft (41.15 m)  |
| Horizontal Reach                 | 80 ft (24.38 m)   |
| Up and Over Height               | —                 |
| Swing                            | 360° Continuous   |
| Platform Capacity — Restricted   | 1,000 lb (454 kg) |
| Platform Capacity — Unrestricted | 500 lb (227 kg)   |
| Platform Rotator                 | 180°              |
| JibPLUS <sup>®</sup>             |                   |
| Length                           | 8 ft (2.44 m)     |
| Horizontal Motion <sup>1</sup>   | 180°              |
| Vertical Motion                  | 130° (+75/-55)    |

Dimensional Data

|                     |  |
|---------------------|--|
| A. Platform Size    | 36 x 96 in. (0.91 x 2.44 m)            |
| B. Overall Width    | Axles Retracted 8 ft 2 in. (2.49 m)    |
| Overall Width       | Axles Extended 12 ft 6 in. (3.81 m)    |
| C. Tailswing        | 5 ft 6 in. (1.67 m)                    |
| D. Stowed Height    | 10 ft (3.05 m)                         |
| E. Overall Length   | Jib Stowed 38 ft 11 in. (11.86 m)      |
| Overall Length      | Jib Deployed 48 ft 10.25 in. (14.89 m) |
| F. Wheel Base       | 12 ft 6 in. (3.81 m)                   |
| G. Ground Clearance | Axle 12 in. (30 cm)                    |
|                     | Chassis 25.5 in. (65 cm)               |
| Weight <sup>2</sup> | 45,000 lb (20,411 kg)                  |

Chassis

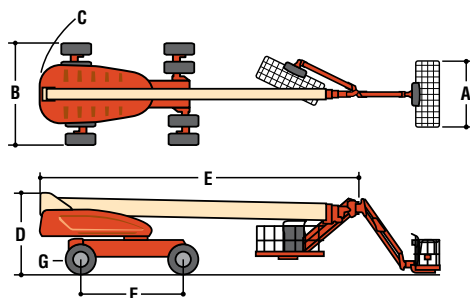
|                               |                                      |
|-------------------------------|--------------------------------------|
| Max Ground Bearing Pressure*  | 107 psi (7.52 kg/cm <sup>2</sup> )   |
| Drive Speed                   | 3.25 mph (5.2 km/h)                  |
| Gradeability                  | 45%                                  |
| Turning Radius (Inside)       | Axles Retracted 14 ft 5 in. (4.39 m) |
|                               | Axles Extended 8 ft (2.44 m)         |
| Turning Radius (Outside)      | Axles Retracted 22 ft 6 in. (6.86 m) |
|                               | Axles Extended 19 ft 4 in. (5.89 m)  |
| Crab Steer Ratio <sup>3</sup> | 1:1                                  |
| Axle Oscillation              | 12 in. (30 cm)                       |
| Tires/Type                    | 445/50D710 Foam Filled               |

Power Source

|                              |                            |                   |
|------------------------------|----------------------------|-------------------|
| Diesel Engine                | Deutz TD3.6L Tier IV Final | 74.2 hp (55.4 kW) |
| Fuel Tank Capacity           |                            | 31 gal (117 L)    |
| Hydraulic Reservoir          |                            | 55 gal (208 L)    |
| Auxiliary Power              |                            | 12V DC            |
| Generator Nominal/Continuous |                            | 7,500 Watt        |

\*Ground bearing pressure applies to standard tires.

- Capacity is limited to 500 lb (227 kg) when JibPLUS is extended horizontally.
- Certain options or country standards increase weight.
- Ratio of forward travel to lateral travel.



Standard Features

Platform: 36 x 96 in. (0.91 x 2.44 m) Side Entry  
8 ft (2.44 m) JibPLUS<sup>®</sup> Boom  
Selectable Capacity Envelope  
Inward Swinging Gate  
180° Hydraulic Platform Rotator  
AC Receptacle in the Platform  
5 Degree Tilt Alarm/Indicator Light  
All Motion Alarm  
Swing-Out Engine Tray  
12V DC Auxiliary Power  
Hourmeter  
Control ADE<sup>®</sup> System  
Full-time 4WD  
3 Selectable Steering Modes  
Drive-out Extendible Axles  
Oscillating Axle  
Proportional Controls  
Gull-Wing Hoods  
445/50D710 Foam Filled Rim Protector Lug Tread Tires  
Platform Console Machine Status Light Panel\*  
Lifting/Tie Down Lugs  
Engine Distress Warning/Shutdown—Selectable via JLG Analyzer  
SkyGuard SkyLine™

Available Options

Platform: 36 x 72 in. (0.91 x 1.83 m) Side Entry

Fall-Arrest Platform: 36 x 96 in. (0.91 x 2.44 m) Side Entry  
Self-Closing Gate  
Light Package<sup>1</sup>  
Flashing Beacon  
Soft-Touch System Platform 6 ft/8 ft (1.83 m/2.44 m)  
ClearSky (US and Canada only)  
Cold Weather Start<sup>2</sup>  
Hostile Environment Kit<sup>3</sup>  
Mesh to Top Rail  
Operator Tool Tray  
1. Includes platform mounted work lights and drive/backup lights.  
2. Includes glow plugs, battery heater and oil tank heater.  
3. Includes console cover, boom wipers and cylinder bellows.

Accessory Packages

SkyPower<sup>®</sup> Package  
7500 Watt Generator  
- 240/120V Single Phase  
- 240V 3 Phase  
1/2 in. Air Line to Platform

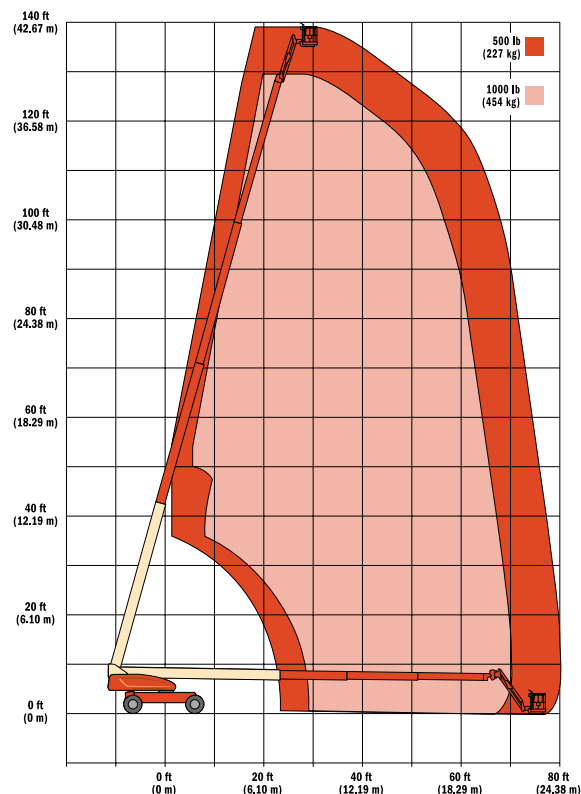
SkyWelder<sup>®</sup>

SkyCutter<sup>®</sup>

SkyGlazier<sup>®</sup>

Pipe Racks

\* Provides indicator lights at platform control console for system distress, fuel level, low fuel, 5 degree tilt light and foot switch status.



# Ultra Series SPECIFICATIONS

## 1500SJ

### Ultra Series Telescopic Boom Lifts Reach Specifications

|                                  |                                |                                       |
|----------------------------------|--------------------------------|---------------------------------------|
| Platform Height                  | 150 ft (45.7 m)                |                                       |
| Horizontal Reach                 | 80 ft (24.38 m)                |                                       |
| Up and Over Height               | —                              |                                       |
| Swing                            | 360° Continuous                |                                       |
| Platform Capacity — Restricted   | 1,000 lb (454 kg)              |                                       |
| Platform Capacity — Unrestricted | 500 lb (227 kg)                |                                       |
| Platform Rotator                 | 180°                           |                                       |
| Jib                              | Length                         | 15 ft 2 in. - 25 ft (4.62 m - 7.62 m) |
|                                  | Horizontal Motion <sup>1</sup> | For Transport Only                    |
|                                  | Vertical Motion                | 120° (+75/-45)                        |

### Dimensional Data

|                     |                             |                     |                       |
|---------------------|-----------------------------|---------------------|-----------------------|
| A. Platform Size    | 36 x 96 in. (0.91 x 2.44 m) |                     |                       |
| B. Overall Width    | Axles Retracted             | 8 ft 2 in. (2.49 m) |                       |
|                     | Overall Width               | Axles Extended      | 12 ft 6 in. (3.81 m)  |
| C. Tailswing        | 5 ft 6 in. (1.67 m)         |                     |                       |
| D. Stowed Height    | 10 ft (3.05 m)              |                     |                       |
| E. Overall Length   | Jib Stowed                  | 43 ft (11.45 m)     |                       |
|                     | Overall Length              | Jib Deployed        | 61 ft 9 in. (18.82 m) |
| F. Wheel Base       | 12 ft 6 in. (3.81 m)        |                     |                       |
| G. Ground Clearance | Axle                        | 12 in. (30 cm)      |                       |
|                     | Chassis                     | 25.5 in. (65 cm)    |                       |
| Weight <sup>2</sup> | 48,000 lb (21,773 kg)       |                     |                       |

### Chassis

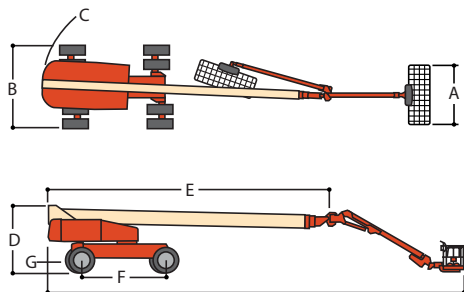
|                               |                                    |                      |
|-------------------------------|------------------------------------|----------------------|
| Max Ground Bearing Pressure*  | 113 psi (7.94 kg/cm <sup>2</sup> ) |                      |
| Drive Speed                   | 3.0 mph (4.8 km/h)                 |                      |
| Gradeability                  | 40%                                |                      |
| Turning Radius (Inside)       | Axles Retracted                    | 14 ft 5 in. (4.39 m) |
|                               | Axles Extended                     | 8 ft (2.44 m)        |
| Turning Radius (Outside)      | Axles Retracted                    | 22 ft 6 in. (6.86 m) |
|                               | Axles Extended                     | 19 ft 4 in. (5.89 m) |
| Crab Steer Ratio <sup>3</sup> | 1:1                                |                      |
| Axle Oscillation              | 12 in. (30 cm)                     |                      |
| Tires/Type                    | 445/50D710 Foam Filled             |                      |

### Power Source

|                     |                             |                   |
|---------------------|-----------------------------|-------------------|
| Diesel Engine       | Deutz TCD2.9L4 Tier 4 Final | 74.2 hp (55.4 kW) |
| Fuel Tank Capacity  | 31 gal (117 L)              |                   |
| Hydraulic Reservoir | 55 gal (208 L)              |                   |
| Auxiliary Power     | 12V DC                      |                   |
| Generator           | 7,500 Watt                  |                   |

\*Ground bearing pressure applies to standard tires.

- Capacity is limited to 500 lb (227 kg) when Jib is extended.
- Certain options or country standards increase weight.
- Ratio of forward travel to lateral travel.



### Standard Features

Platform: 36 x 96 in. (0.91 x 2.44 m) Side Entry  
8 ft (2.44 m) JibPLUS<sup>®</sup> Boom  
Selectable Capacity Envelope  
180° Hydraulic Platform Rotator  
AC Receptacle in the Platform  
5 Degree Tilt Alarm/Indicator Light  
All Motion Alarm  
Swing-Out Engine Tray  
12V DC Auxiliary Power  
Hourmeter  
Control ADE<sup>®</sup> System  
Full-time 4WD  
3 Selectable Steering Modes  
Drive-out Extendible Axles  
Oscillating Axle  
Proportional Controls  
Gull-Wing Hoods  
445/50D710 Foam Filled Rim Protector Lug Tread Tires  
Platform Console Machine Status Light Panel\*  
Lifting/Tie Down Lugs  
Engine Distress Warning/Shutdown—Selectable via JLG Analyzer  
SkyGuard SkyLine™

Fall-Arrest Platform: 36 x 96 in. (0.91 x 2.44 m) Side Entry

Self-Closing Gate

Light Package<sup>1</sup>

Flashing Beacon

Soft-Touch System Platform  
6 ft/8 ft (1.83 m/2.44 m)

ClearSky (US and Canada only)

Cold Weather Start<sup>2</sup>

Hostile Environment Kit<sup>3</sup>

Mesh to Top Rail

Operator Tool Tray

1. Includes platform mounted work lights and drive/backup lights.

2. Includes glow plugs, battery heater and oil tank heater.

3. Includes console cover, boom wipers and cylinder bellows.

### Accessory Packages

SkyPower<sup>®</sup> Package

7500 Watt Generator  
- 240/120V Single Phase  
- 240V 3 Phase  
1/2 in. Air Line to Platform

SkyWelder<sup>®</sup>

SkyCutter<sup>®</sup>

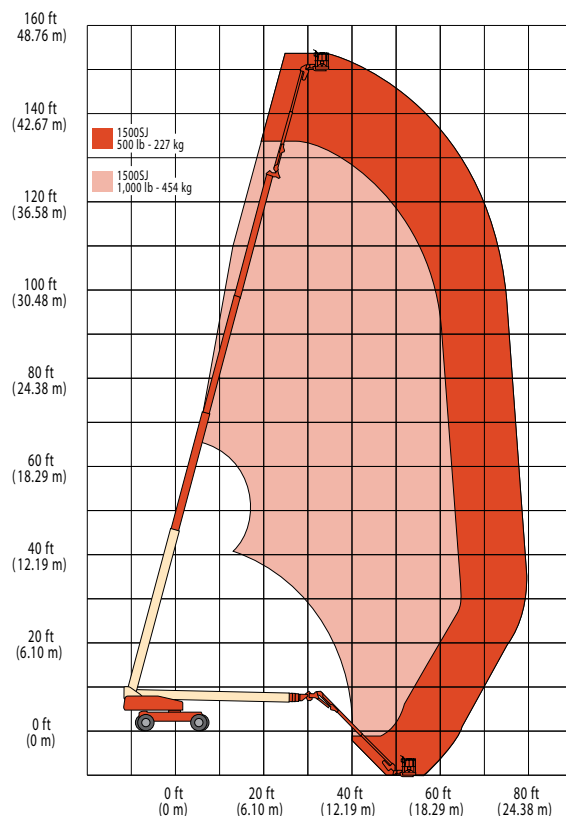
SkyGlazier<sup>®</sup>

Pipe Racks

### Available Options

Platform: 36 x 72 in. (0.91 x 1.83 m) Side Entry

\* Provides indicator lights at platform control console for system distress, fuel level, low fuel, 5 degree tilt light and foot switch status.



1850SJ

Ultra Series Telescopic Boom Lifts  
Reach Specifications

|                                  |                                |                    |
|----------------------------------|--------------------------------|--------------------|
| Platform Height                  | 185 ft 7 in. (56.56 m)         |                    |
| Horizontal Reach                 | 80 ft (24.38 m)                |                    |
| Swing                            | 360° Continuous                |                    |
| Platform Capacity — Restricted   | 1,000 lb (454 kg)              |                    |
| Platform Capacity — Unrestricted | 500 lb (227 kg)                |                    |
| Platform Rotator                 | 173° Hydraulic                 |                    |
| Jib                              | Length                         | 13 ft (3.96 m)     |
|                                  | Horizontal Motion <sup>1</sup> | For Transport Only |
|                                  | Vertical Motion                | 120° (+75/-45)     |

Dimensional Data

|                     |                            |                         |
|---------------------|----------------------------|-------------------------|
| A. Platform Size    | 36 x 96 in. (.91 x 2.44 m) |                         |
| B. Overall Width    | Axles Retracted            | 8 ft 2 in. (2.49 m)     |
|                     | Axles Extended             | 16 ft 6 in. (5.03 m)    |
| C. Tailswing        | 7 ft 7 in. (2.32 m)        |                         |
| D. Stowed Height    | 10 ft (3.05 m)             |                         |
| E. Overall Length   | Jib Stowed                 | 47 ft 9.5 in. (14.57 m) |
|                     | Jib Deployed               | 63 ft 10 in. (19.45 m)  |
| F. Wheel Base       | 17 ft 7 in. (5.36 m)       |                         |
| G. Ground Clearance | Axle                       | 13.5 in. (34 cm)        |
|                     | Chassis                    | 16.25 in. (41 cm)       |
| Weight <sup>1</sup> | 59,930 lb (27,184 kg)      |                         |

Chassis

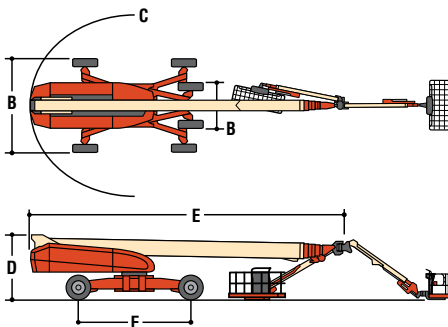
|                               |                                      |                      |
|-------------------------------|--------------------------------------|----------------------|
| Max Ground Bearing Pressure*  | 119.6 psi (8.41 kg/cm <sup>2</sup> ) |                      |
| Drive Speed                   | 2.8 mph (4.5 km/h)                   |                      |
| Gradeability                  | 40%                                  |                      |
| Turning Radius (Inside)       | Axles Retracted                      | 23 ft 4 in. (7.12 m) |
|                               | Axles Extended                       | 7 ft 7 in. (2.3 m)   |
| Turning Radius (Outside)      | Axles Retracted                      | 31 ft 3 in. (9.52 m) |
|                               | Axles Extended                       | 21 ft 8 in. (6.6 m)  |
| Crab Steer Ratio <sup>3</sup> | 1:1                                  |                      |
| Tires/Type                    | 445/50D710 Foam Filled               |                      |

Power Source

|                     |                           |                   |
|---------------------|---------------------------|-------------------|
| Diesel Engine       | Deutz TD3.6L Tier 4 Final | 99.8 hp (74.4 kW) |
| Fuel Tank Capacity  | 52.8 gal (200 L)          |                   |
| Hydraulic Reservoir | 75.1 gal (284.2 L)        |                   |
| Auxiliary Power     | 12V DC                    |                   |
| Generator           | 7,500 Watt                |                   |

\*Ground bearing pressure applies to standard tires.

- Capacity is limited to 500 lb (227 kg) when Jib is extended.
- Certain options or country standards increase weight.
- Ratio of forward travel to lateral travel.



Standard Features

- Platform 36 x 96 in. (.91 x 2.44 m) Side Entry
- Selectable Capacity Envelope
- Drive-Out Extendable Axles
- 173° Hydraulic Platform Rotator
- AC Receptacle in Platform
- Tilt Light and Alarm
- Swing-Out Engine Tray
- 12V-DC Auxiliary Power
- Hourmeter
- Control ADE® System
- Full-Time 4WD
- 3 Selectable Steering Modes
- Proportional Controls
- Gull-Wing Steel Hoods
- 445/50D710 Foam-Filled Rim Protector Lug Tread Tires
- Platform Console Machine Status Light Panel\*
- Lifting/Tie Down Lugs
- Engine Distress Warning/Shutdown—Selectable via JLG Analyzer
- All Motion Alarm
- Glow Plugs
- LCD Panel at Operator's Platform Control Console
- SkyGuard SkyLine™
- 36 x 72 in. (.91 x 1.83 m) Platform
- Inward Self-Closing Swing Gate

- Fall Arrest Platform 36 x 96 in. (.91 x 2.44 m) Rear Entry<sup>5</sup>
- Mesh to Top Rail-Bolt-on Aluminum 6 ft<sup>3</sup>
- Mesh to Top Rail-Bolt-on Aluminum 8 ft<sup>3</sup> Light Package<sup>1</sup>
- Soft Touch System
- Cold Weather Start Kit<sup>2</sup>
- Hostile Environment Kit<sup>3</sup>
- Flashing Amber Beacon
- Cold Package Plus<sup>4</sup>
- Tool Tray
- Special Hydraulic Oils
- 1. Includes platform mounted worklights and drive/backup lights.
- 2. Includes battery heater and oil tank heater.
- 3. Includes console cover, boom wipers and cylinder bellows.
- 4. Includes extreme cold engine oil, fuel conditioner, engine block heater, battery blanket, glow plugs, hydraulic tank heater, and oversized footswitch. Arctic hydraulic oil priced separately.
- 5. Not available in all markets.

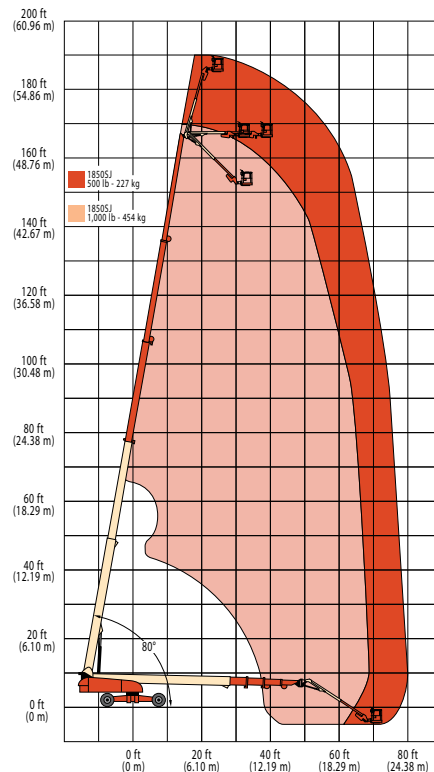
Accessory Packages

- SkyPower® Package
  - 7500 Watt Generator
  - 240/120V Single Phase
  - 240V 3 Phase
  - 1/2 in. Air Line to Platform
- SkyWelder® Package
- SkyCutter®
- SkyGlazier®
- Pipe Rack

Available Options

- 36 x 72 in. (.91 x 1.83 m) Platform
- Inward Self-Closing Swing Gate

\* Provides indicator lights at platform control console for system distress, fuel level, low fuel, 5 degree tilt light and foot switch status.





## AJ Access Platforms Ltd

Pill Way, Severn Bridge Industrial Estate, Caldicot Monmouthshire, NP26 5PU, United Kingdom.  
Phone: +44 (0) 1291 421 155 Email: [info@accessplatforms.com](mailto:info@accessplatforms.com), [sales@accessplatforms.com](mailto:sales@accessplatforms.com)



### JLG Industries, Inc.

1 JLG Drive  
McConnellsburg, PA 17233-9533  
Telephone 717-485-5161  
Toll-free in US 877-JLG-LIFT  
Fax 717-485-6417  
[www.jlg.com](http://www.jlg.com)

An Oshkosh Corporation Company

Part No.: 3131561  
R051922  
Printed in USA

