

1500AJP

ULTRA SERIES BOOM LIFT



Performance

Platform Height	150 ft	45.72 m
Horizontal Outreach	75 ft	22.86 m
Up and Over Height	60 ft	18.29 m
Swing	360° Continuous	
Platform Capacity-Restricted	1,000 lb	454 kg
Platform Capacity-Unrestricted	600 lb	272 kg
Platform Rotator	180° Hydraulic	
Jib Length	8 ft	2.4 m
Jib Range of Articulation	130° (+75, -55)	
Jib Horizontal Rotation	125° (55 right, 70 left)	
Weight ¹	57,400 lb	26,039 kg
Max. Ground Bearing Pressure	120 psi	83.7 kg/cm ²
Drive Speed	2.8 mph	4.5 km/h
Gradeability	40%	
Tilt Cut Out	5°	
Turning Radius (Inside)		
Axles Retracted	23 ft 4 in.	7.12 m
Axles Extended	7 ft 6 in.	2.3 m
Turning Radius (Outside)		
Axles Retracted	31 ft 3 in.	9.52 m
Axles Extended	21 ft 8 in.	6.6 m
Tailswing		
Tower up	0	
Tower down	8 ft 2 in.	2.49 m

Standard Specifications

Power Source

Diesel Engine		
Deutz TCD 3.6L Tier IV F	99.8 hp	74.4 kW
Fuel Tank Capacity	45 gal	170 L

Hydraulic System

• Hydraulic Tank Capacity	93 gal	352 L
---------------------------	--------	-------

Tires

• Standard	445/50D710 24 ply Foam-Filled
------------	-------------------------------

Standard Features

- Articulating Jib
- Dual Rated Capacities (600/1,000 lb)
- Drive-Out Extendable Axles
- 180° Hydraulic Platform Rotator
- AC Receptacle in Platform
- Tilt Light and Alarm
- Swing-Out Engine Tray
- 12V-DC Auxiliary Power
- Hourmeter
- Control ADE® System
- Hydrostatic Drive
- Proportional Controls
- SkyGuard SkyLine™
- Dual USB Power Outlet
- Gull-Wing Steel Hoods
- 445/50D710 Foam-Filled Rim Protector Lug Tread Tires
- Platform Console Machine Status Light Panel²
- Lifting/Tie Down Lugs
- Engine Distress Warning/Shutdown—Selectable via JLG Analyzer
- All Motion Alarm
- LCD Panel at Operator's Platform Control Console
- Quick Stik®
- Load Sensing System (LSS)



Accessories & Options

- 36 x 72 in. (.91 x 1.83 m) Platform
- Inward Self-Closing Swing Gate
- Light Package³
- Soft Touch System
- Cold Weather Start Kit⁴
- Hostile Environment Kit⁵
- Flashing Amber Beacon
- Cold Package Plus⁶
- Fall Arrest Platform
- Tool Tray
- Special Hydraulic Oils
- SkySense™
- Accessory Packages:
 - SkyWelder®
 - SkyPower® Package — 7500 Watt Generator Power Cable to Platform

1. Certain options or country standards increase weight.
2. Provides indicator lights at platform control console for system distress, fuel level, low fuel, 5 degree tilt light and foot switch status.
3. Includes platform work lights, head and tail lights, amber beacon.
4. Includes engine block heater, battery heater and oil tank heater.
5. Includes console cover, boom wipers and cylinder bellows.
6. Includes extreme cold engine oil, fuel conditioner, engine block heater, battery blanket, glow plugs, hydraulic tank heater, oversized footswitch and arctic hydraulic oil priced separately.

Additional accessories and options available via JLG Aftermarket.

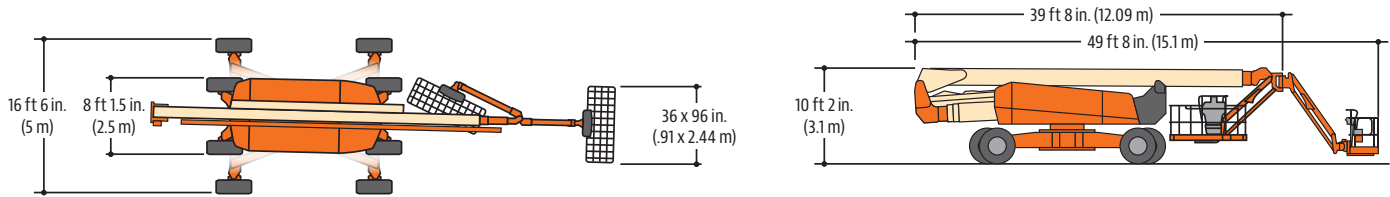
1500AJP

ULTRA SERIES BOOM LIFT



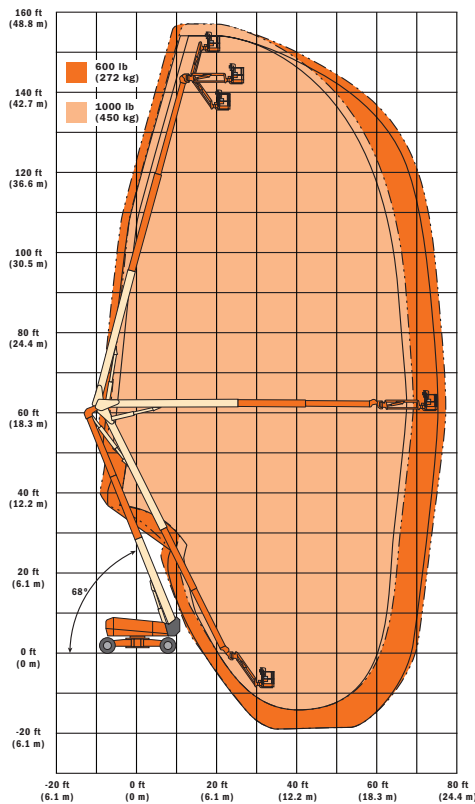
Dimensions

All dimensions are approximate.



Reach Diagram

1500AJP



AJ Access Platforms Ltd

Pill Way, Severn Bridge Industrial Estate, Caldicot Monmouthshire, NP26 5PU, United Kingdom.
Phone: +44 (0) 1291 421 155 Email: info@accessplatforms.com, sales@accessplatforms.com



The JLG "1 & 5" Warranty

JLG Industries, Inc. backs its products with its exclusive "1 & 5" Warranty. We provide coverage for one (1) full year and cover all specified major structural components for five (5) years. Due to continuous product improvements, we reserve the right to make specification and/or equipment changes without prior notification. This machine meets or exceeds applicable ANSI and CSA requirements based on machine configuration as originally manufactured for intended applications. Please reference the serial number plate on the machine for additional information.

Part No.: 3131031
R1219_A92.20
Printed in USA

JLG Industries, Inc.
1 JLG Drive
McConnellsburg, PA 17233-9533
Telephone 717-485-5161
Toll-free in US 877-JLG-LIFT
Fax 717-485-6417
www.jlg.com

An Oshkosh Corporation Company